

## RESEARCH ARTICLE

## Musical expertise generalizes to superior temporal scaling in a Morse code tapping task

Matthew A. Slayton<sup>1‡</sup>, Juan L. Romero-Sosa<sup>2,3‡</sup>, Katrina Shore<sup>1</sup>, Dean V. Buonomano<sup>2,3,4‡\*</sup>, Indre V. Viskontas<sup>1,5‡\*</sup>

**1** San Francisco Conservatory of Music, San Francisco, CA, United States of America, **2** Department of Neurobiology, University of California Los Angeles, Los Angeles, CA, United States of America, **3** Neuroscience Interdepartmental Program, University of California Los Angeles, Los Angeles, CA, United States of America, **4** Department of Psychology, University of California Los Angeles, Los Angeles, CA, United States of America, **5** Department of Psychology, University of San Francisco, San Francisco, CA, United States of America

‡ MAS and JRS are Joint First Authors on this work. DVB and IVV are Joint Senior Authors on this work.

\* [dbuono@ucla.edu](mailto:dbuono@ucla.edu) (DVB); [ivviskontas@usfca.edu](mailto:ivviskontas@usfca.edu) (IVV)



## OPEN ACCESS

**Citation:** Slayton MA, Romero-Sosa JL, Shore K, Buonomano DV, Viskontas IV (2020) Musical expertise generalizes to superior temporal scaling in a Morse code tapping task. PLoS ONE 15(1): e0221000. <https://doi.org/10.1371/journal.pone.0221000>

**Editor:** Jessica Adrienne Grahn, University of Western Ontario, CANADA

**Received:** July 25, 2019

**Accepted:** December 10, 2019

**Published:** January 6, 2020

**Peer Review History:** PLOS recognizes the benefits of transparency in the peer review process; therefore, we enable the publication of all of the content of peer review and author responses alongside final, published articles. The editorial history of this article is available here: <https://doi.org/10.1371/journal.pone.0221000>

**Copyright:** © 2020 Slayton et al. This is an open access article distributed under the terms of the [Creative Commons Attribution License](https://creativecommons.org/licenses/by/4.0/), which permits unrestricted use, distribution, and reproduction in any medium, provided the original author and source are credited.

**Data Availability Statement:** The data underlying the results presented in the study are freely available on Open Science Framework at <https://osf.io/hf6k5/>.

## Abstract

A key feature of the brain's ability to tell time and generate complex temporal patterns is its capacity to produce similar temporal patterns at different speeds. For example, humans can tie a shoe, type, or play an instrument at different speeds or tempi—a phenomenon referred to as temporal scaling. While it is well established that training improves timing precision and accuracy, it is not known whether expertise improves temporal scaling, and if so, whether it generalizes across skill domains. We quantified temporal scaling and timing precision in musicians and non-musicians as they learned to tap a Morse code sequence. We found that non-musicians improved significantly over the course of days of training at the standard speed. In contrast, musicians exhibited a high level of temporal precision on the first day, which did not improve significantly with training. Although there was no significant difference in performance at the end of training at the standard speed, musicians were significantly better at temporal scaling—i.e., at reproducing the learned Morse code pattern at faster and slower speeds. Interestingly, both musicians and non-musicians exhibited a Weber-speed effect, where temporal precision at the same absolute time was higher when producing patterns at the faster speed. These results are the first to establish that the ability to generate the same motor patterns at different speeds improves with extensive training and generalizes to non-musical domains.

## Introduction

Central to the brain's ability to perform precise sensory and motor tasks is the capacity to execute these tasks at varying speeds [1–7]. This ability to temporally scale motor responses is critical and intrinsic to many motor behaviors, such as catching a ball, speaking, or playing a musical instrument. While the neural mechanisms underlying timing on the scale of hundreds of milliseconds to seconds continue to be debated, there is converging evidence from animal

**Funding:** The authors received no specific funding for this work.

**Competing interests:** The authors have declared that no competing interests exist.

studies suggesting that some forms of timing are encoded in dynamically changing patterns of neural activity, or population clocks [4,8–13]. Importantly, experimental evidence and simulations suggest that these patterns of activity can unfold at different speeds, thus potentially accounting for the temporal scaling of motor responses [4,6,14,15].

A well-established characteristic of motor timing is that it operates in accordance with Weber's Law, whereby the variability of a timed response is proportional to the length of the interval [16–18]. It has also been shown that temporal precision can be improved by subdividing a desired interval [19–21] or by increasing movement speed [6]. For example, the variability of a response produced at one second is smaller if it is embedded within a fast rather than a slow pattern—a phenomenon called the *Weber-speed effect* [6].

Numerous studies have established that the relationship between temporal variability (as measured by standard deviation) of a response and the mean time of the response—i.e., the Weber Coefficient—improves with practice [22–25]. Consistent with these observations, musicians generally exhibit superior performance in a number of temporal, sensory, and motor tasks [26–30]. What has not been investigated, however, is whether temporal scaling improves with practice. For example, once a temporal motor pattern is learned, is it the case that it can be produced accurately at different speeds, similar to increasing or decreasing the playback speed of a movie? Or, is the ability to produce a given pattern at different speeds itself learned and therefore dependent on experience?

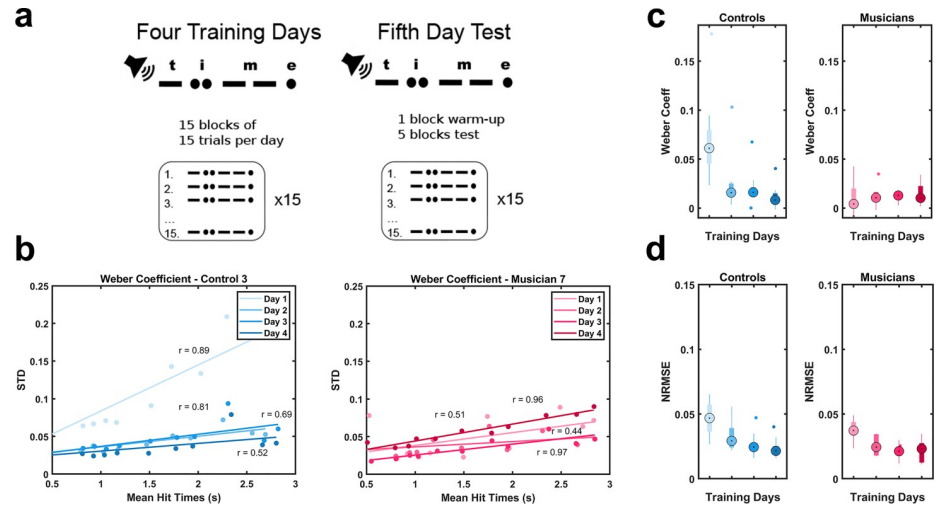
Here, we investigated whether musicians, who are trained specifically to have timing expertise, exhibit superior temporal scaling on a nonmusical temporal pattern reproduction task [6]. Specifically, we used a Morse code production task because it is purely temporal and non-rhythmic. Additionally, we explored whether the Weber-speed effect is still present in musicians, or rather, as might be desirable for experts, whether temporal precision is constant across different speeds.

## Results

We trained a group of highly experienced musicians and a group of non-musician controls on a temporal pattern reproduction task in which subjects listened to the word “time” in Morse code and attempted to reproduce a sequence of six dots and dashes as accurately as possible (Fig 1A). After each trial, they received visual feedback about the difference between the produced and target patterns, as well as a score representing the correlation between the two. Both groups repeated this task over four successive days, and on the fifth day subjects were tested on their ability to reproduce the pattern at three different speeds: the original speed (1x), as well as twice (2x) and half (0.5x) the trained speed.

To quantify learning we determined the Weber Coefficient across training days by plotting the standard deviation of the tap times against the mean tap times and calculating the slope of the linear regression (Fig 1B, single subject). As measured by the normalized root-mean-square-error (NRMSE), performance improved in both groups (day effect of a two-way ANOVA,  $F_{3,48} = 11.4$ ,  $p < .001$ ; no significant group or interaction effect) (Fig 1C). This improvement reflects, in part, learning of the Morse code pattern itself. Interestingly, controls showed a significant decrease in the Weber Coefficient over the four days of training ( $F_{1,3} = 7.65$ ,  $p < .001$ ), whereas musicians started with a low Weber Coefficient that did not improve over time ( $F_{1,3} = .09$ ,  $p = .967$ ) (Fig 1D). These results establish that while both groups learned the pattern over time, the musicians exhibited a floor effect for temporal precision—i.e., consistent with previous studies, their cross-trial variance was low from the outset.

Next, we asked whether there were any differences in overall performance or temporal precision between both groups on the 1x pattern on test day (Day 5). In this phase of the study,



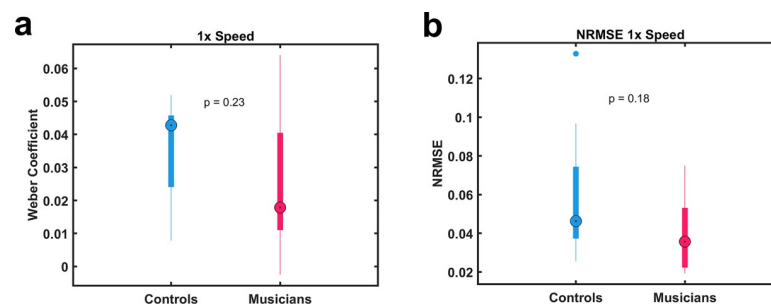
**Fig 1. Temporal precision in non-musician controls but not musicians improves significantly over the course of four training days.** (A) Schematic of the protocol and stimuli. (B) Sample data across four days for one musician and one control subject. The slope of the linear fit of the standard deviation versus mean tap time was defined as the Weber Coefficient. (C, D) Boxplots were plotted for all nine subjects from each group for the four training days for both normalized root-mean-square-error (NRMSE) (C) and Weber Coefficient (D).

<https://doi.org/10.1371/journal.pone.0221000.g001>

subjects were asked to produce the pattern under freeform conditions—i.e., in blocks in which they did not listen to the pattern first. To quantify the performance on test day we calculated the Weber Coefficient of the averaged tap times (Fig 2A) and NRMSE (Fig 2B). There was no significant difference between musicians and controls in their ability to produce the learned pattern at 1x speed, suggesting that the control group was able to reach a similar level of mastery in the task before we tested the temporal scaling capabilities of both groups.

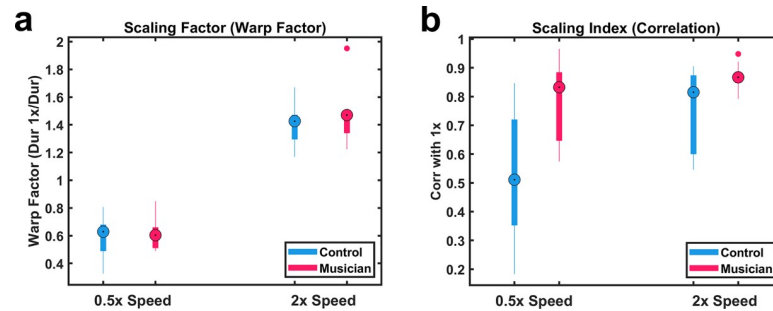
### Musicians exhibit better temporal scaling

We next quantified temporal scaling—how well subjects produced the pattern at double (2x) and half speed (0.5x) on test day. Because the responses generally differed significantly from the targeted 2x and 0.5x speeds, we first quantified the actual magnitude of the speed-up or slow-down. To this end, we estimated a Scaling Factor based on the ratio of the 1x duration to the 2x and 0.5x durations. Perfect scaling would be 2 and 0.5 for the fast and slow speed conditions, respectively. There was no significant difference in the Scaling Factor between groups ( $F_{1,16} = .203, p = .66$ ) (Fig 3A). Both musicians and controls produced the pattern at approximately the same speeds: 1.6x and 0.7x in the 2x and 0.5x conditions, respectively.



**Fig 2. Performance at the 1x speed on test day.** (A, B) On test day there was no significant difference between the musician and control groups for either the Weber Coefficient (A) or the NRMSE (B) at the 1x speed.

<https://doi.org/10.1371/journal.pone.0221000.g002>



**Fig 3. Superior temporal scaling in musicians.** (A) Magnitude of temporal scaling as measured by Scaling Factor, the ratio of the duration of the 1x pattern in relation to the duration of the 0.5x or 2x patterns. (B) Quality of temporal scaling as measured by Scaling Index (the correlation between the mean tap times in the 2x or 0.5x and 1x patterns). Scaling Index was significantly better in the musician group at both speeds.

<https://doi.org/10.1371/journal.pone.0221000.g003>

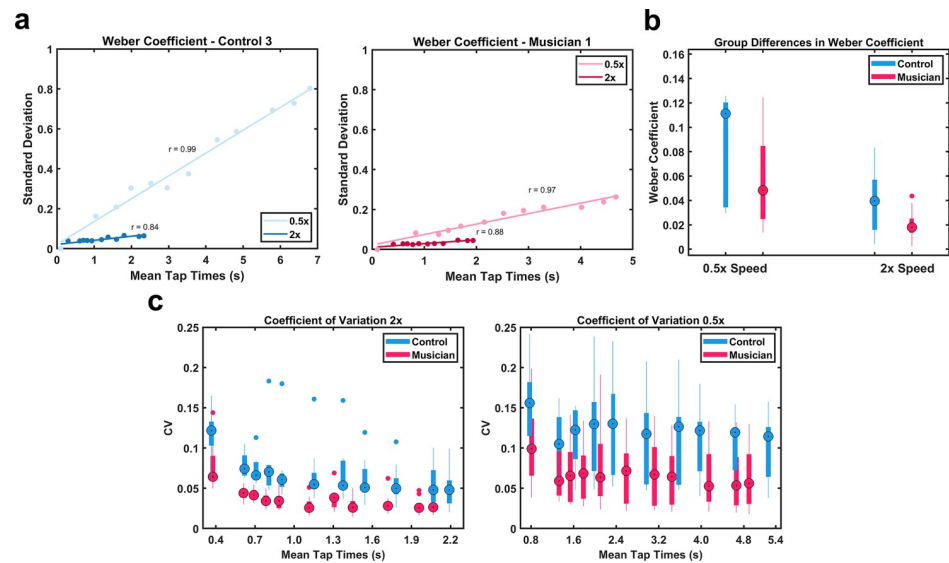
Having established the absence of any differences in the speeds produced, we next quantified the quality of the temporal scaling. We defined a Scaling Index as the correlation between the mean tap times at the 2x or 0.5x speeds with the taps produced at the 1x speed—thus perfect scaling at any speed would correspond to a Scaling Index of 1. A two-way ANOVA with repeated measures on one factor revealed a significant difference between speeds ( $F_{1,16} = 8.57$ ,  $p = .009$ ) (Fig 3B), i.e., the correlation between the 2x taps and 1x taps was significantly higher than the correlation between the 0.5x taps and 1x taps. Together with the lack of an interaction effect ( $F_{1,16} = 1.91$ ,  $p = .19$ ), these findings indicate that both groups were better at scaling to faster speeds. Importantly, there was also a significant group effect ( $F_{1,16} = 11.93$ ,  $p = .003$ ). Thus, although the overall performance at the 1x condition was similar and there was no difference in the produced speeds, the musicians were significantly better at scaling the motor pattern to both faster and slower speeds. Importantly, the difference in the quality of temporal scaling cannot be attributed to the magnitude of the scaling (i.e., how fast or slow the patterns were) because there was no group difference in the speeds of the patterns in either the 2x or 0.5x condition.

### The Weber-speed effect was observed in both groups

To determine whether a Weber-speed effect were present, and if the effects were similar or different in musicians and controls, we estimated the Weber Coefficient (Fig 4). A two-way ANOVA with repeated measures on one factor revealed a significant difference in speed ( $F_{1,16} = 12.585$ ,  $p = .0027$ ) and the absence of an interaction. Thus, subjects in both groups were more precise at the 2x speed—demonstrating the Weber-speed effect in both groups. There was also a significant difference between groups ( $F_{1,16} = 5.273$ ,  $p = .0355$ ), but no interaction. Finally, as shown in Fig 4C, the coefficient of variation (the per standard deviation mean tap time ratio) was significantly lower across all taps in the musician group for both the 2x ( $F_{1,160} = 9.8$ ,  $p < .001$ ) and the 0.5x ( $F_{1,160} = 9.8$ ,  $p < .001$ ). These findings provide additional support for those in Fig 3, and further establish that the temporal precision at the scaled speeds was superior in the musician group.

### Discussion

The ability to execute well timed movements at different speeds is a fundamental feature of motor control. Our results provide the first evidence that the ability to speed up or slow down motor patterns precisely is dependent on experience and generalizes across skill domains. Specifically, even though the temporal precision of motor patterns was equivalent in both the



**Fig 4. Analysis of variance at scaled times.** (A) Example of the Weber Coefficient for a musician and a control subject at the 0.5x and 2x speeds. (B) Analysis of the Weber coefficients revealed main effects of group (Musicians  $\times$  Controls) and speed (0.5x versus 2x). (C) The coefficient of variation (the ratio of standard deviation and mean) across all taps was significantly lower for the musician group at both speeds.

<https://doi.org/10.1371/journal.pone.0221000.g004>

musician and non-musician groups at the end of training (Fig 2), the temporal precision of the musicians on a nonrhythmic temporal pattern production task was significantly better when they were asked to produce the trained pattern at faster and slower speeds (Fig 3).

Additionally, our results are consistent with previous studies demonstrating that, at baseline, musicians generally exhibit superior temporal precision and accuracy in both the sensory and motor domains [21,29–34]. For example, on the first day of training, the Weber Coefficient of the musicians was dramatically smaller (Fig 1). The neural mechanisms underlying improved temporal precision in musicians are not known, but they likely include higher-order cognitive strategies as well as unconscious motor skills. For example, musical training has been shown to promote endogenous oscillations, which may endow musicians with superior ability to track the beat and predict the timing of beat onsets [35]. Training also facilitates greater synchronization with partners across different spontaneous timing rates, with musicians showing lower variability than non-musicians due to greater engagement of error-correction strategies [36,37]. It has also been observed that covariance between fingers was highly constant across tempi in expert pianists [30]. Finally, the earlier the age at which musicians start training, the better they perform on tests of timing expertise [38].

The cognitive mechanisms underlying temporal scaling are even less understood than those underlying timing in general. However, one possible mechanism by which humans may accomplish scaling is through the synergistic recruitment of sensory and motor areas [39,40]. Auditory-motor integration, for example, is associated with the capacity to identify the temporal structure of rhythm [34]. Rhythm training also strengthens inhibitory control, potentially eliminating unnecessary actions by fine-tuning motor networks that track the temporal structure of music [24]. Furthermore, it should be stressed that the relative increase in accuracy with increased speed is distinct from the standard speed (reaction time)-accuracy trade-off, a separate phenomenon that is generally studied in reaction time tasks [41,42] in which performance decreases with speed.

At a more mechanistic level, it has been proposed that timing of complex motor patterns relies on population clocks—i.e., time-varying changes in the spatiotemporal patterns of

activity that can encode time and drive motor activity [10,43]. An attractive property of the population clock model is that it can account for temporal scaling if the speed at which these patterns flow can be modulated. There is indeed evidence that, in the case of the production of simple intervals or durations, temporally scaled patterns of activity are observed as animals produce intervals of different durations [4,11,14,15]. Furthermore, there is theoretical evidence that recurrent neural networks can be trained to account for temporal scaling of complex motor patterns by changing the speed of neural patterns of activity [6].

A somewhat counterintuitive property of motor timing is that temporal precision can be improved by subdivision [20,21,44]—e.g., to produce a more precise 1 second duration, humans can subdivide the response into two intervals of 0.5 seconds. Relatedly, temporal precision is also improved by increasing motor speed [6]. This Weber-speed effect is somewhat paradoxical in that it implies that temporal precision is best when generating a temporal pattern at a fast speed, or while playing a musical piece at a fast tempo (i.e., the Weber Coefficients are smaller at fast speeds). In other words, both absolute and relative timing are significantly worse when playing a musical piece at a slow tempo. Here we asked whether training might allow musicians to overcome the Weber-speed effect, as it might be desirable to equate and maximize temporal precision at all speeds. We determined that this is not the case. In both musicians and non-musicians, the Weber Coefficients were significantly smaller in the 2x condition, and the ratios between the 2x and 0.5x conditions were similar as indicated by the absence of a significant interaction (Fig 4). These results suggest that the Weber-speed effect is an intrinsic and perhaps unavoidable consequence of the neural mechanisms underlying timing, a hypothesis that is consistent with the observation that computational models of timing that rely on the dynamics of recurrent neural networks also exhibit the Weber-speed effect [6].

## Materials and methods

### Recruitment of subjects

Musicians and non-musicians were recruited to participate in the study. The musician group comprised ten subjects, one of whom was excluded because of a data collection error. The musicians included seven graduate students at the San Francisco Conservatory of Music, two professional musicians who had previously earned a Master of Music degree, and one UCLA undergraduate majoring in music. They had each been playing music for an average of 14.2 years ( $SD = 2.97$  years) and their ages ranged from 19 to 28 years old. The non-musician group included ten undergraduate students from University of San Francisco and UCLA whose ages ranged from 18 to 24 years old. Although six non-musician subjects had played music in the past, none were studying music at a university level nor actively practicing or performing. All experiments were run in accordance with the University of California Human Subjects Guidelines and were approved by UCLA's Institutional Review Board. Participants provided written informed consent before participation and were paid \$10/hour for their participation.

### Protocol description

Subjects participated in the experiment for five consecutive days. During training days, subjects heard and reproduced the same pattern by tapping a keypad in 15 blocks of 15 repetitions each (Fig 1A). After each trial, they saw a visual representation of the timing of the produced and target patterns, as well as a score representing the correlation. On test day (Day 5), subjects were given one block as a warm-up, and then were asked to produce the pattern at three speeds (in randomized order): twice as fast (2x), half as fast (0.5x), and at the original speed (1x) without receiving any additional auditory stimuli. The target pattern was a series of short and long 550Hz tones, spelling the word "time" in Morse Code. When prompted by written instructions



on the screen, subjects played back the pattern using a single button on a Cedrus Response Pad™, connected to a personal computer using custom Matlab code and the Psychophysics Toolbox. The target speed for the Morse Code was 10 WPM (words per minute). Every ‘dot’ was 120ms long and every ‘dash’ was 360ms long. Between each element that comprises a letter was a ‘dot-length’ pause, and between the last element of a letter and the first element of another letter was a ‘dash-length’ pause for a total duration of 2.76s. The specific sequence was dash (0-360ms) + pause (360-720ms) + dot (720-840ms) + pause (840-960ms) + dot (960-1080ms) + pause (1080-1440ms) + dash (1440-1800ms) + pause (1800-1920ms) + dash (1920-2280ms) + pause (2280-2640ms) + dot (2640-2760ms). After the reproduction, a visual representation of the target stimulus as well as the subject’s entry appeared on the screen, alongside a score reflecting the correlation between the target and reproduced pattern. Between blocks, participants were allowed to take a short break. However, during each block, participants were asked to interact with the program continuously. The stimulus generation and experimental interface were written in Matlab. Data analysis and statistics relied on custom written Matlab code.

### Weber Coefficient and data analysis

The Weber Coefficient was calculated as described previously using Weber’s generalized Law [45,46], in which the relationship of mean and variance of motor responses is represented as  $\sigma^2 = kT^2 + \sigma_{independent}^2$  where  $\sigma^2$  represents total variance,  $\sigma_{independent}^2$  the tempo-independent variance,  $k$  the Weber Coefficient that approximates the square root of the conventional Weber fraction at long intervals, and  $T$  is time. Trials were excluded according to two sequential criteria: when the end time of the produced pattern was three or more times longer than the target end time (generally indicating that a subject lost track of how many taps they produced), and next when the values were more than two standard deviations from their mean. The Normalized Root Mean Squared Error was calculated by finding the square root of the means of the squared differences between produced time and target time, normalized by the time of the final target time tap offset.

### Author Contributions

**Conceptualization:** Juan L. Romero-Sosa, Katrina Shore, Dean V. Buonomano.

**Data curation:** Matthew A. Slayton, Juan L. Romero-Sosa.

**Formal analysis:** Matthew A. Slayton, Juan L. Romero-Sosa.

**Investigation:** Katrina Shore.

**Methodology:** Juan L. Romero-Sosa, Katrina Shore.

**Project administration:** Indre V. Viskontas.

**Software:** Matthew A. Slayton, Juan L. Romero-Sosa.

**Supervision:** Indre V. Viskontas.

**Writing – original draft:** Matthew A. Slayton, Dean V. Buonomano, Indre V. Viskontas.

**Writing – review & editing:** Matthew A. Slayton, Dean V. Buonomano, Indre V. Viskontas.

### References

1. Dowling WJ, Bartlett JC, Halpern AR, Andrews MW. Melody recognition at fast and slow tempos: Effects of age, experience, and familiarity. *Percept Psychophys*. 2008 Apr 1; 70(3):496–502. <https://doi.org/10.3758/pp.70.3.496> PMID: 18459260

2. Shankar KH, Howard MW. A Scale-Invariant Internal Representation of Time. *Neural Comput.* 2012 Jan 29; 24(1):134–93. [https://doi.org/10.1162/NECO\\_a\\_00212](https://doi.org/10.1162/NECO_a_00212) PMID: 21919782
3. Lerner Y, Honey CJ, Katkov M, Hasson U. Temporal scaling of neural responses to compressed and dilated natural speech. *J Neurophysiol.* 2014 Jun 15; 111(12):2433–44. <https://doi.org/10.1152/jn.00497.2013> PMID: 24647432
4. Mello GBM, Soares S, Paton JJ. A Scalable Population Code for Time in the Striatum. *Curr Biol.* 2015 May 4; 25(9):1113–22. <https://doi.org/10.1016/j.cub.2015.02.036> PMID: 25913405
5. Namboodiri VMK, Huertas MA, Monk KJ, Shouval HZ, Hussain Shuler MG. Visually Cued Action Timing in the Primary Visual Cortex. *Neuron.* 2015 Apr 8; 86(1):319–30. <https://doi.org/10.1016/j.neuron.2015.02.043> PMID: 25819611
6. Hardy NF, Goudar V, Romero-Sosa JL, Buonomano D V. A model of temporal scaling correctly predicts that motor timing improves with speed. *Nat Commun.* 2018 Dec 9; 9(1):4732. <https://doi.org/10.1038/s41467-018-07161-6> PMID: 30413692
7. Buhusi C.V., and Meck W.H. (2005). What makes us tick? Functional and neural mechanisms of interval timing. *Nat Rev Neurosci* 6, 755–765. <https://doi.org/10.1038/nrn1764> PMID: 16163383
8. Coull JT, Cheng R-K, Meck WH. Neuroanatomical and Neurochemical Substrates of Timing. *Neuropsychopharmacology.* 2011 Jan 28; 36(1):3–25. <https://doi.org/10.1038/npp.2010.113> PMID: 20668434
9. Merchant H, Harrington DL, Meck WH. Neural Basis of the Perception and Estimation of Time. *Annu Rev Neurosci.* 2013 Jul 8; 36(1):313–36.
10. Paton JJ, Buonomano D V. The Neural Basis of Timing: Distributed Mechanisms for Diverse Functions. *Neuron.* 2018 May 16; 98(4):687–705. <https://doi.org/10.1016/j.neuron.2018.03.045> PMID: 29772201
11. Long MA, Fee MS. Using temperature to analyse temporal dynamics in the songbird motor pathway. *Nature.* 2008; 456(7219):189–94. <https://doi.org/10.1038/nature07448> PMID: 19005546
12. Long MA, Jin DZ, Fee MS (2010) Support for a synaptic chain model of neuronal sequence generation. *Nature* 468:394–399. <https://doi.org/10.1038/nature09514> PMID: 20972420
13. Bakhurin KI, Goudar V, Shobe JL, Claar LD, Buonomano DV, Masmanidis SC (2017) Differential Encoding of Time by Prefrontal and Striatal Network Dynamics. *The Journal of Neuroscience* 37:854–870. <https://doi.org/10.1523/JNEUROSCI.1789-16.2016> PMID: 28123021
14. Remington ED, Narain D, Hosseini EA, Jazayeri M. Flexible Sensorimotor Computations through Rapid Reconfiguration of Cortical Dynamics. *Neuron.* 2018 Jun 6; 98(5):1005–1019.e5. <https://doi.org/10.1016/j.neuron.2018.05.020> PMID: 29879384
15. Wang J, Narain D, Hosseini EA, Jazayeri M. Flexible timing by temporal scaling of cortical responses. *Nat Neurosci.* 2018 Jan 4; 21(1):102–10. <https://doi.org/10.1038/s41593-017-0028-6> PMID: 29203897
16. Gibbon J. Scalar expectancy theory and Weber's law in animal timing. *Psychol Rev.* 1977 May; 84(3):279–325.
17. Killeen PR, Weiss NA. Optimal timing and the Weber function. *Psychol Rev.* 1987; 94(4):455–68. PMID: 3317471
18. Grondin S. About the (Non)scalar Property for Time Perception. In Springer, New York, NY; 2014. p. 17–32.
19. Grondin S, Ouellet B, Roussel M-E. Benefits and Limits of Explicit Counting for Discriminating Temporal Intervals. *Can J Exp Psychol Can Psychol expérimentale.* 2004; 58(1):1–12.
20. Hinton SC, Harrington DL, Binder JR, Durgerian S, Rao SM. Neural systems supporting timing and chronometric counting: an fMRI study. *Cogn Brain Res.* 2004 Oct 1; 21(2):183–92.
21. Grondin S, Killeen PR. Tracking time with song and count: Different Weber functions for musicians and nonmusicians. *Atten Percept Psychophys.* 2009 Oct 1; 71(7):1649–54. <https://doi.org/10.3758/APP.71.7.1649> PMID: 19801624
22. Buetti D, Buonomano D V. Temporal perceptual learning. *Timing Time Percept.* 2014; 2(3):261–89.
23. Wright BA, Wilson RM, Sabin AT. Generalization Lags behind Learning on an Auditory Perceptual Task. *J Neurosci.* 2010; 30(35):11635–9. <https://doi.org/10.1523/JNEUROSCI.1441-10.2010> PMID: 20810884
24. Laje R, Cheng K, Buonomano D V. Learning of Temporal Motor Patterns: An Analysis of Continuous Versus Reset Timing. *Front Integr Neurosci.* 2011; 5 Oct:1–11.
25. Buetti D, Lasaponara S, Cercignani M, Macaluso E. Learning about Time: Plastic Changes and Interindividual Brain Differences. *Neuron.* 2012; 75(4):725–37. <https://doi.org/10.1016/j.neuron.2012.07.019> PMID: 22920262
26. Hosoda M, Furuya S. Shared somatosensory and motor functions in musicians. *Sci Rep.* 2016 Dec 25; 6(1):37632.



27. Krause V, Schnitzler A, Pollok B. Functional network interactions during sensorimotor synchronization in musicians and non-musicians. *Neuroimage*. 2010 Aug 1; 52(1):245–51. <https://doi.org/10.1016/j.neuroimage.2010.03.081> PMID: 20363337
28. Chen JL, Penhune VB, Zatorre RJ. Moving on Time: Brain Network for Auditory-Motor Synchronization is Modulated by Rhythm Complexity and Musical Training. *J Cogn Neurosci*. 2008 Feb 14; 20(2):226–39. <https://doi.org/10.1162/jocn.2008.20018> PMID: 18275331
29. Keele SW, Pokorny RA, Corcos DM, Ivry R. Do perception and motor production share common timing mechanisms: A correlational analysis. *Acta Psychol (Amst)*. 1985 Dec 1; 60(2–3):173–91.
30. Furuya S, Soechting JF. Speed invariance of independent control of finger movements in pianists. *J Neurophysiol*. 2012; 108(7):2060–8 <https://doi.org/10.1152/jn.00378.2012> PMID: 22815403
31. Cicchini GM, Arrighi R, Cecchetti L, Giusti M, Burr DC. Optimal encoding of interval timing in expert percussionists. *J Neurosci*. 2012 Jan 18; 32(3):1056–60. <https://doi.org/10.1523/JNEUROSCI.3411-11.2012> PMID: 22262903
32. Rammsayer TH, Buttus F, Altenmüller E. Musicians Do Better than Nonmusicians in Both Auditory and Visual Timing Tasks. *Music Percept An Interdiscip J*. 2012 Sep 1; 30(1):85–96.
33. Kraus N, Chandrasekaran B. Music training for the development of auditory skills. *Nat Rev Neurosci*. 2010 Aug 1; 11(8):599–605. <https://doi.org/10.1038/nrn2882> PMID: 20648064
34. Chen JL, Penhune VB, Zatorre RJ. Moving on Time: Brain Network for Auditory-Motor Synchronization is Modulated by Rhythm Complexity and Musical Training. *J Cogn Neurosci*. 2008 Feb 14; 20(2):226–39. <https://doi.org/10.1162/jocn.2008.20018> PMID: 18275331
35. Stupacher J, Wood G, Witte M. Neural Entrainment to Polyrhythms: A Comparison of Musicians and Non-musicians. *Front Neurosci*. 2017 Apr 12; 11:208. <https://doi.org/10.3389/fnins.2017.00208> PMID: 28446864
36. Penhune V, Ding N, Fujioka T, Palmer C, Scheurich R, Zamm A. Tapping Into Rate Flexibility: Musical Training Facilitates Synchronization Around Spontaneous Production Rates. 2018.
37. Repp BH. Sensorimotor synchronization and perception of timing: Effects of music training and task experience. *Hum Mov Sci*. 2010 Apr 1; 29(2):200–13. <https://doi.org/10.1016/j.humov.2009.08.002> PMID: 20074825
38. Watanabe D, Savion-Lemieux T, Penhune VB. The effect of early musical training on adult motor performance: evidence for a sensitive period in motor learning. *Exp Brain Res* 2007 Jan 4; 176(2):332–40. <https://doi.org/10.1007/s00221-006-0619-z> PMID: 16896980
39. Patel AD. Musical Rhythm, Linguistic Rhythm, and Human Evolution. *Music Percept*. 2006 Sep 1; 24(1):99–104.
40. Patel AD, Iversen JR. The evolutionary neuroscience of musical beat perception: the Action Simulation for Auditory Prediction (ASAP) hypothesis. *Front Syst Neurosci*. 2014 May 13; 8:57. <https://doi.org/10.3389/fnsys.2014.00057> PMID: 24860439
41. Karni A, Meyer G, Rey-Hipolito C, Jezard P, Adams MM, Turner R, et al. The acquisition of skilled motor performance: fast and slow experience-driven changes in primary motor cortex. *Proc Natl Acad Sci USA*. 1998 Feb 3; 95(3):861–8. <https://doi.org/10.1073/pnas.95.3.861> PMID: 9448252
42. Harris CM, Wolpert DM. Signal-dependent noise determines motor planning. *Nature* 1998 Aug. 394(6695):780–4 <https://doi.org/10.1038/29528> PMID: 9723616
43. Buonomano DV, Karmarkar UR (2002) How do we tell time? *Neuroscientist* 8:42–51. <https://doi.org/10.1177/107385840200800109> PMID: 11843098
44. Grondin S, Meilleur-Wells G, Lachance R. When to start explicit counting in a time-intervals discrimination task: A critical point in the timing process of humans. *J Exp Psychol Hum Percept Perform*. 1999; 25(4):993–1004.
45. Ivry RB, Hazeltine RE. Perception and production of temporal intervals across a range of durations: evidence for a common timing mechanism. *J Exp Psychol Hum Percept Perform*. 1995 Feb; 21(1):3–18. <https://doi.org/10.1037//0096-1523.21.1.3> PMID: 7707031
46. Merchant H, Zarco W, Prado L. Do We Have a Common Mechanism for Measuring Time in the Hundreds of Millisecond Range? Evidence From Multiple-Interval Timing Tasks. *J Neurophysiol*. 2008 Feb; 99(2):939–49. <https://doi.org/10.1152/jn.01225.2007> PMID: 18094101