

# Neural Sequences as an Optimal Dynamical Regime for the Readout of Time

## Highlights

- Timing is critical to the brain's ability to predict and prepare for future events
- During a two-interval task, time was encoded in both premotor cortex and striatum
- Dynamics in the striatum, however, was more sequential
- Neural sequences provide an ideal set of basis functions to read out time

## Authors

Shanglin Zhou, Sotiris C. Masmanidis,  
Dean V. Buonomano

## Correspondence

smananidis@ucla.edu (S.C.M.),  
dbuono@ucla.edu (D.V.B.)

## In Brief

By recording in the striatum and premotor cortex during a two-interval timing task, Zhou et al. show that, while both areas encode time, the dynamics in the striatum is more sequential. These neural sequences provide an ideal code for downstream areas to read out time in a biologically plausible manner.

Report

# Neural Sequences as an Optimal Dynamical Regime for the Readout of Time

Shanglin Zhou,<sup>1</sup> Sotiris C. Masmanidis,<sup>1,2,3,\*</sup> and Dean V. Buonomano<sup>1,3,4,\*</sup>

<sup>1</sup>Department of Neurobiology, University of California, Los Angeles, Los Angeles, CA 90095, USA

<sup>2</sup>California Nanosystems Institute, University of California, Los Angeles, Los Angeles, CA 90095, USA

<sup>3</sup>Senior author

<sup>4</sup>Lead Contact

\*Correspondence: [smasmanidis@ucla.edu](mailto:smasmanidis@ucla.edu) (S.C.M.), [dbuono@ucla.edu](mailto:dbuono@ucla.edu) (D.V.B.)

<https://doi.org/10.1016/j.neuron.2020.08.020>

## SUMMARY

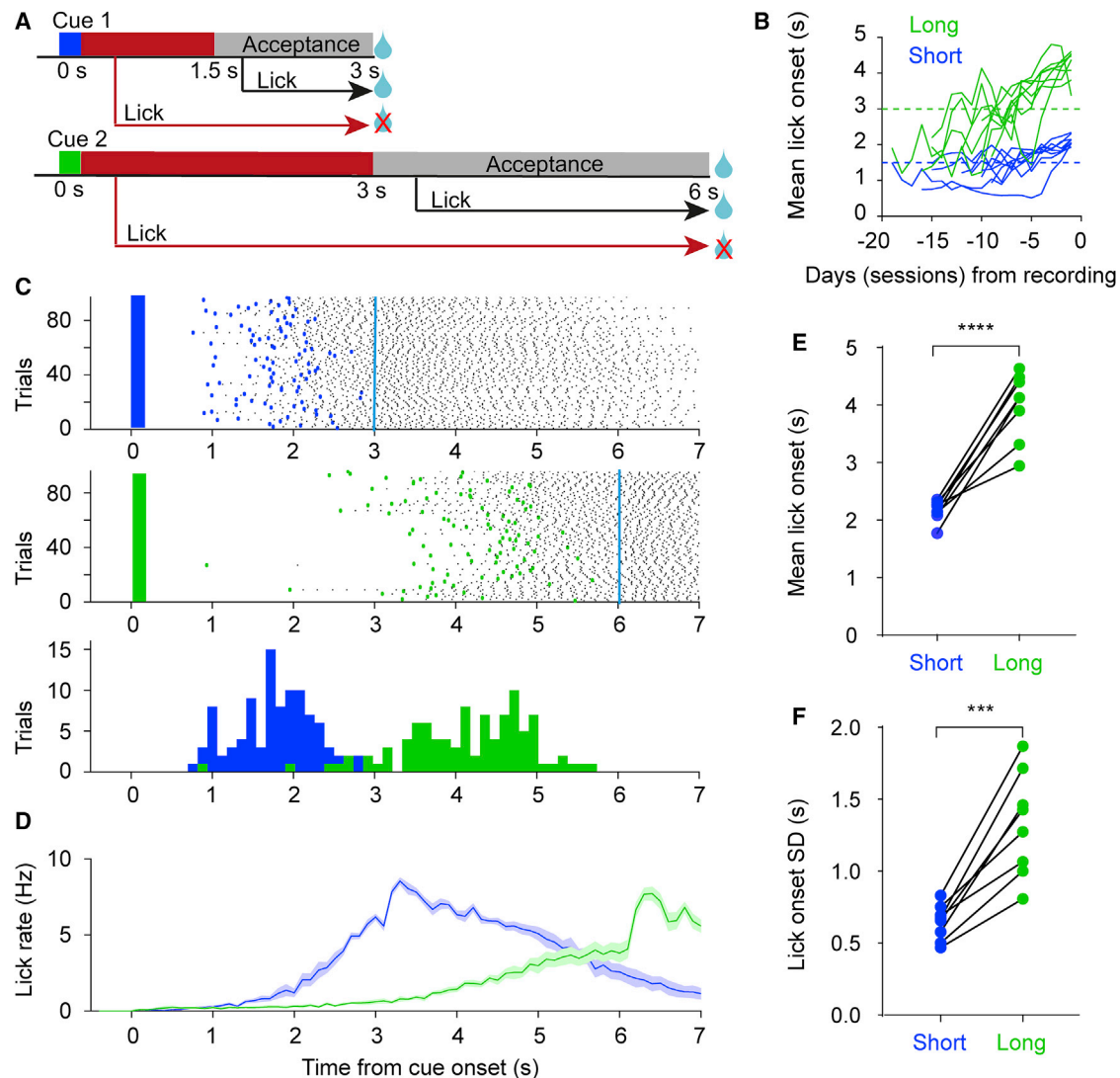
Converging evidence suggests that the brain encodes time through dynamically changing patterns of neural activity, including neural sequences, ramping activity, and complex spatiotemporal dynamics. However, the potential computational significance and advantage of these different regimes have remained unaddressed. We combined large-scale recordings and modeling to compare population dynamics between premotor cortex and striatum in mice performing a two-interval timing task. Conventional decoders revealed that the dynamics within each area encoded time equally well; however, the dynamics in striatum exhibited a higher degree of sequentiality. Analysis of premotor and striatal dynamics, together with a large set of simulated prototypical dynamical regimes, revealed that regimes with higher sequentiality allowed a biologically constrained artificial downstream network to better read out time. These results suggest that, although different strategies exist for encoding time in the brain, neural sequences represent an ideal and flexible dynamical regime for enabling downstream areas to read out this information.

## INTRODUCTION

Tracking the passage of time on the subsecond to second scale is critical for motor control and many forms of learning and cognition, including the ability to anticipate future events (Ivry and Spencer, 2004; Merchant et al., 2013a). While the neural mechanisms underlying timing remain poorly understood, there is growing evidence that time is represented via population-level spatiotemporal patterns of neural activity and that these dynamical regimes are distributed across multiple areas (Paton and Buonomano, 2018; Wang et al., 2018). To date, numerous different dynamical regimes have been implicated in timing, including neural sequences, ramping, and complex mixed and multi-peaked patterns (Leon and Shadlen, 2003; Hasselmo, 2008; Pastalkova et al., 2008; Long et al., 2010; MacDonald et al., 2011; van der Meer and Redish, 2011; Kraus et al., 2013; Stokes et al., 2013; Crowe et al., 2014; Carnevale et al., 2015; Kraus et al., 2015; Emmons et al., 2017; Heys and Dombeck, 2018; Tsao et al., 2018; Liu et al., 2019). However, the potential computational significance of these different regimes remains unclear. In particular, what is the potential computational trade-off of encoding time through the progressive activation of neurons (a neural sequence), approximately linear changes in firing rate, or complex neural trajectories in which any given neuron can exhibit multiple peaks in activity? Answering this question has been hampered by challenges in rigorously quantifying and

comparing different dynamical regimes across different brain areas. For example, while it is often the case that neural trajectories appear sequence like when sorted appropriately, the degree of sequentiality is rarely quantified—e.g., the overlap of the temporal fields of consecutively active neurons (related to the temporal sparsity) or the presence of additional secondary peaks is often not taken into account.

Some of the brain areas that have consistently been implicated in timing exhibit fundamentally different circuit motifs; for example, while premotor areas are characterized by the presence of robust recurrent excitation, striatal circuits lack recurrent excitation (Shepherd, 1998). The functional and computational consequences of these different circuit motifs for the encoding of time remain unexplored. Here, we explicitly contrasted the dynamics of dorsolateral striatum (DLS) and secondary motor cortex (M2) during a two-interval timing task. We developed novel measures to quantify the sequentiality of the dynamics and whether neural activity undergoes temporal scaling from the short to long intervals. We found that the DLS exhibits more sequential dynamics, which provide a more flexible regime for downstream areas to read out time in a biologically plausible manner. These findings suggest a previously unknown computational role for the striatum in timing and provide general insights into which type of dynamical regimes are optimal for reading out temporal information in downstream brain areas.



**Figure 1. Two-Interval Timing Task in Mice**

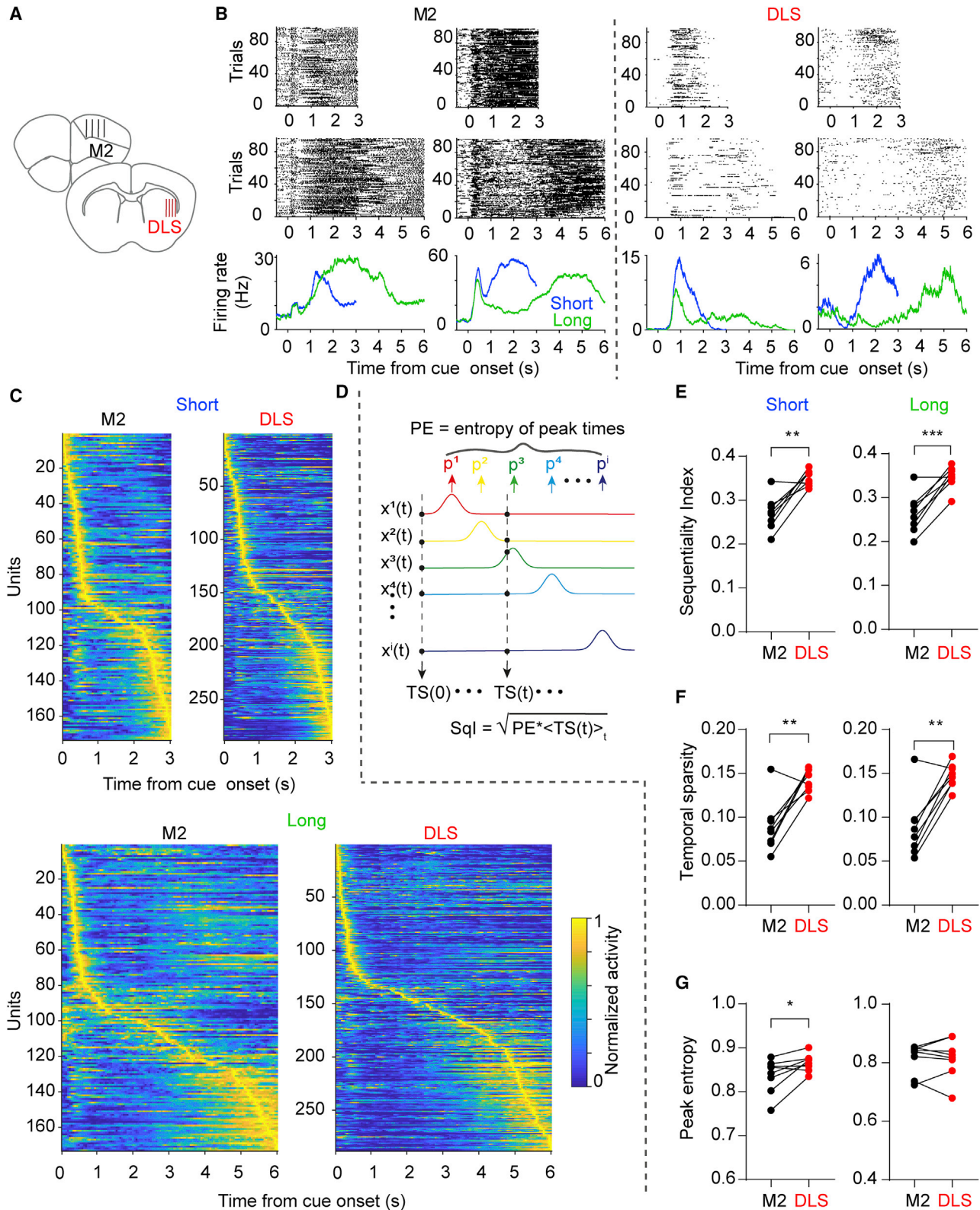
(A) Task schematic. In each trial, mice were presented with one of two olfactory cues for 0.2 s and rewarded if they withheld licking during the time period indicated in red. Mice were rewarded irrespective of whether they licked or not during the acceptance period shown in gray. Cue 1, short interval; cue 2, long interval. (B) Learning curve of mean lick onset time for all 8 mice up to the day before recording day (1 session per day). The dashed horizontal lines denote the start of the lick acceptance period for short- (blue) and long-interval (green) trials. (C) Lick raster plot on short- (top) and long- (middle) interval trials for one animal on the recording day. Only trials with anticipatory licking are shown (cyan lines denote the time of reward). Bottom: distribution of the same animal's lick onset times on short- (blue) and long- (green) interval trials. (D) Average lick rate on short- (blue) and long- (green) interval trials across all mice ( $n = 8$ ). Shaded area represents SEM. Cyan lines denote the time of reward. (E) The mean lick onset time was significantly higher for the long interval ( $n = 8$  mice; two-sided paired  $t$  test,  $t_7 = 8.296$ ,  $p < 0.0001$ ). (F) The standard deviation of the lick onset time was significantly higher for the long interval ( $n = 8$  mice; two-sided paired  $t$  test,  $t_7 = 6.728$ ,  $p = 0.0003$ ).

## RESULTS

We compared simultaneously recorded neural dynamics in M2 and DLS, as head-fixed mice performed a two-interval timing task ( $n = 8$ ). Animals were randomly presented with one of two olfactory cues for 0.2 s. A reward was delivered with a 3 s (cue 1, short interval) or 6 s delay (cue 2, long interval) if mice withheld licking for the first 1.5 s after cue 1 onset, or 3 s after cue 2 onset (Figure 1A). Mice learned to differentially time the onset of their

anticipatory licking in response to the cues (Figures 1B–1D). The mean and standard deviation of the lick onset time were both significantly higher for the long interval cue (Figures 1E and 1F).

We next used silicon microprobes to simultaneously record spiking activity from neurons in M2 and DLS, as well-trained mice performed the task (range of isolated units: 81–263 in M2, 157–288 in DLS, Figures 2A and 2B). To confirm that, if as reported previously, population dynamics in M2 and DLS encode



(legend on next page)

elapsed time, we decoded time from the population activity on a trial-by-trial basis using a supervised decoder (see [STAR Methods](#)). For both short- and long-interval trials, we found a similar decoding performance between M2 and DLS ([Figures S1A–S1C](#)). Furthermore, since these areas are also associated with motor performance, we confirmed that the animals' lick onset time could be decoded with similar accuracy from each area ([Figures S1D and S1E](#)). These results demonstrate that the neural dynamics in both areas can encode two different temporal intervals but do not address whether both areas use similar encoding schemes. To attempt to rigorously quantify the potential differences in dynamics in both areas, we introduced a novel sequentiality index (Sql) bounded between 0 and 1 (see [STAR Methods](#)). Two aspects of neural dynamics were factored into computing Sql ([Figures 2C–2G](#)): first, the entropy of the distribution of peak firing times across the population—which captures whether the entire interval is homogeneously “tiled” by the peak firing times of neurons—and, second, a measure of temporal sparsity—which captures how much of the activity at each point in time can be attributed to a single neuron. Interestingly, for both delay intervals, Sql was significantly higher in DLS relative to M2 ([Figure 2E](#)). This difference appeared to be primarily due to a higher temporal sparsity of DLS dynamics ([Figures 2F and 2G](#)).

Given that both areas encoded time but exhibited significant differences in neural dynamics, a critical question is how the neural dynamics observed during the short- and long-delay trials are related. Specifically, whether the response profile scaled from the short- to the long-delay trials, or if neurons had the same absolute temporal profile in response to both cues ([Murakami et al., 2014; Mello et al., 2015; Wang et al., 2018](#)). To address this question, we first examined how well a decoder trained on the short trials could predict either absolute time (from 0 to 3 s) or scaled (normalized) time during long trials. While cross-performance was significantly worse under both conditions, the scaled condition was significantly better than the absolute ([Figure S1C](#)). Furthermore, cross-sorted neurograms suggested significant spatial differences during short and long delays, albeit with some shared early sensory and late motor responses ([Figures S1F and S1G](#)). We next developed an absolute-scaling index (ASI; [Figure S2](#)) to quantify whether each unit's activity during both cues is more consistent with an absolute (ASI = 1) or scaling (ASI = 0) property. While a sizable population of cells scaled their responses within the cue-reward interval, other units exhibited a similar temporal profile in response to both cues. The mean ASI, however, was not significantly different between M2 and DLS,

suggesting a comparable mixture of temporally scaled and non-scaled response types in both areas.

### DLS Dynamics Provides a Better Code to Read Out Time

Experimental and computational studies have suggested that sequential dynamics observed in numerous brain areas underlies timing ([Hahnloser et al., 2002; Buonomano, 2005; Long and Fee, 2008; Pastalkova et al., 2008; Kraus et al., 2013; Rajan et al., 2016; Murray and Escola, 2017](#)). However, the potential computational benefit of using neural sequences over other dynamical regimes to encode time has not been addressed. We hypothesized that neural sequences provide a flexible dynamical regime that can be easily read out by downstream areas utilizing biologically plausible learning rules. First, in contrast to the sophisticated machine learning approaches that can perform optimal decoding, biological networks likely rely on simple associative learning rules such as STDP and LTP to decode time. Second, since the projecting neurons of any given area are generally all excitatory or inhibitory, any set of first-order downstream units should at first pass decode time using a complement of positive (or negative) weights.

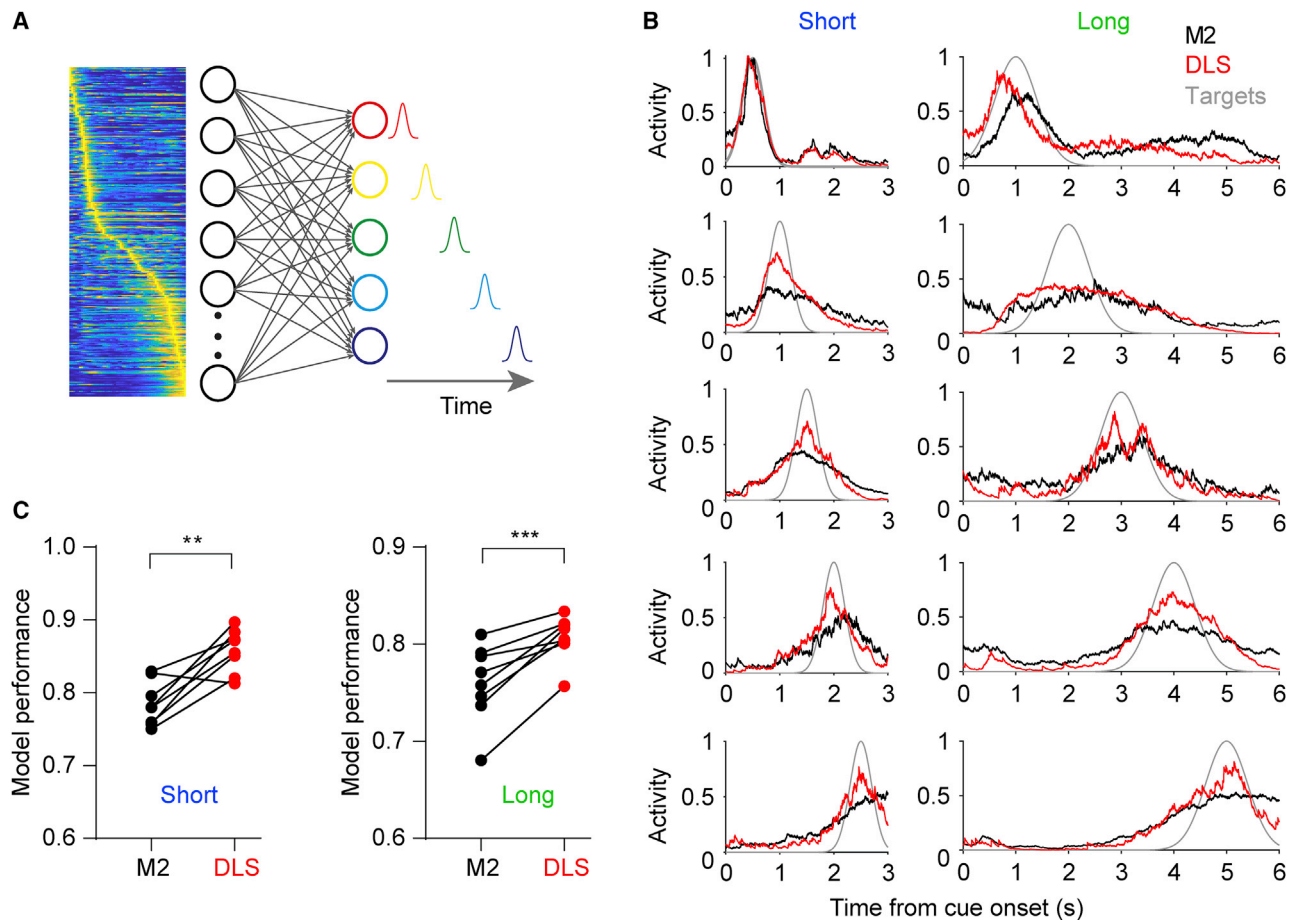
To test this hypothesis, we first examined the ability of hypothetical downstream units to read out time from the experimentally observed dynamics of M2 and DLS. Based on the dynamics in M2 and DLS, five output units were trained to produce five delays, while only allowing non-negative weights onto the output units ([Figure 3A](#)). Consistent with the higher Sql in DLS, outputs trained on DLS dynamics during both the short and long intervals were significantly better at producing the target delays, with performance quantified as the correlation coefficient between the generated and target trajectories ([Figures 3B and 3C](#)). These regional differences were robust to a range of upper weight values and target trajectory numbers used in the model ([Figure S3](#)). Importantly, the enhanced DLS performance was not due to higher activity in this area, and these findings remained unchanged when the analysis was confined to significantly responsive cells ([Figure S4](#)).

### Neural Sequences Provide a Set of Near Orthogonal Basis Functions to Read Out Time

To further understand why dynamics with higher sequentiality (i.e., DLS compared to M2) provided the downstream units a better regime to read out time, we contrasted a wide range of prototypical experimentally observed regimes, includes families of neural sequences ([Hahnloser et al., 2002; Pastalkova et al.,](#)

#### Figure 2. Higher-Sequentiality Indices in DLS Compared to M2

- (A) Illustration of the silicon microprobe recording site locations in M2 and DLS.
- (B) Spiking raster plot for two example units for short (top) and long (middle) intervals with corresponding average firing rate (bottom) in M2 (left) and DLS (right).
- (C) Simultaneously recorded population activity from one animal in M2 and the DLS for the short (top) and long (bottom) interval. Each row represents the firing rate of one unit normalized by its maximum rate. Units were ordered by their latency to maximum firing rate in each area independently (See also [Figure S1](#)). Temporal sparsity is reflected in the off-diagonal regions.
- (D) The sequentiality index (Sql) was calculated from the entropy of the peak response times (PE) across all units multiplied by the temporal sparsity (TS).
- (E) The Sql in DLS was significantly higher than in M2 for both time intervals ( $n = 8$  mice; two-sided paired  $t$  test,  $t_7 = 5.157$ ,  $p = 0.001$  and  $t_7 = 5.855$ ,  $p = 0.0006$  for the short and long intervals, respectively).
- (F) The temporal sparsity in DLS was significantly higher than in M2 for both time intervals ( $n = 8$  mice; two-sided paired  $t$  test,  $t_7 = 4.486$ ,  $p = 0.003$  and  $t_7 = 5.299$ ,  $p = 0.001$  for the short and long interval, respectively).
- (G) The peak entropy in DLS was slightly higher than that in M2 for the short interval but not significantly different for the long interval ( $n = 8$  mice; two-sided paired  $t$  test,  $t_7 = 2.780$ ,  $p = 0.027$  and  $t_7 = 0.107$ ,  $p = 0.918$  for the short and long interval, respectively).



**Figure 3. DLS Dynamics with Higher Sequentiality Is Better at Generating Timed Responses**

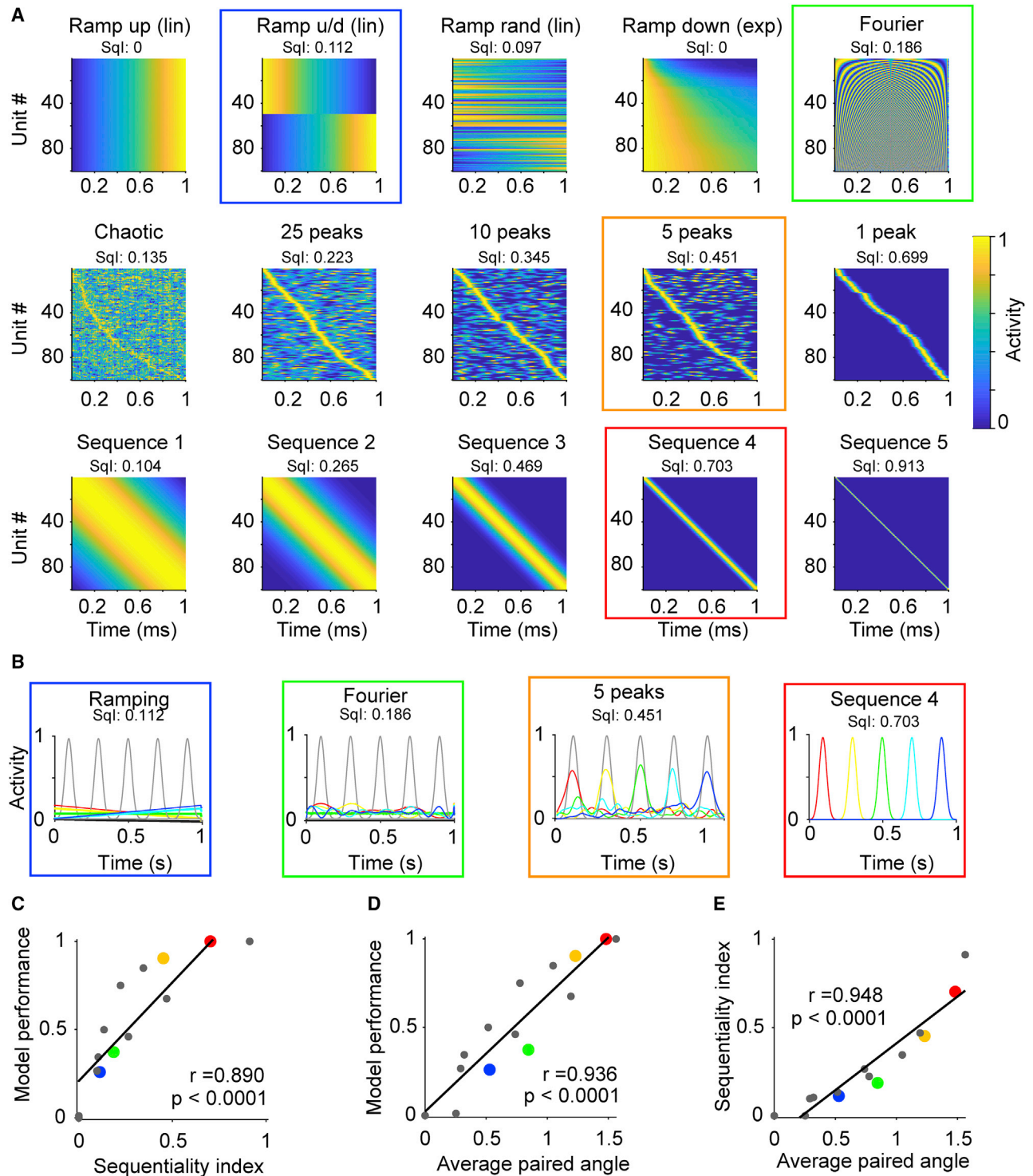
(A) Illustration of the model used to quantify how well downstream networks can read out time from different dynamical regimes. The five output units were trained to generate responses at five different evenly spaced time intervals using a non-negative weight constrained least square model. (B) Responses of the five output units trained to decode the experimentally observed dynamics in M2 (black) or DLS (red). The model was run separately for the short (left) and long (right) interval. Target functions are shown in gray. (C) Performance of the artificial downstream network as measured by the average correlation coefficient between the generated and target trajectories was significantly higher in DLS for both time intervals ( $n = 8$  mice; two-sided paired t test,  $t_7 = 4.565$ ,  $p = 0.0026$  and  $t_7 = 6.027$ ,  $p = 0.0005$  for the short and long interval, respectively) (see also Figures S2–S4).

2008; Kraus et al., 2013), ramps (Leon and Shadlen, 2003), exponential decaying activity (Shankar and Howard, 2012; Liu et al., 2019), and complex spatiotemporal dynamics (Carnevale et al., 2015; Bakhurin et al., 2017), as well as a high-dimensional periodic basis function. Together, these prototypical regimes exhibited a wide spectrum of sequentiality as measured by their Sqi (Figure 4A). Each regime was used as the input to a set of downstream units that were trained to produce five delays using the same constraints as those in Figure 3. Compared to other patterns, e.g., ramping, periodic, or complex (multi-peaked) patterns, sequential trajectories provided the best performance (Figure 4B). Quantification of this effect revealed a positive correlation of performance with the Sqi of different regimes (Figure 4C). This result can be understood in terms of the set of basis functions that each dynamical regime provides for downstream neurons to extract temporal information through a weighted linear combination of each unit. In the extreme, neural se-

quences offer a quasi-orthogonal set of basis functions to read out time. And importantly, in contrast to other near orthogonal basis sets, sequences can be read out using only non-negative weights. Orthogonal bases provide a larger domain from which to generate a target vector. Indeed, the model performance and Sqi positively correlated with the average paired angle between all the units in a given dynamical regime (Figures 4D and 4E).

## DISCUSSION

Previous studies have reported neural codes for elapsed time in both M2 and DLS (Merchant et al., 2013b; Crowe et al., 2014; Carnevale et al., 2015; Gouvêa et al., 2015; Mello et al., 2015; Emmons et al., 2017). Consistent with these previous results, we observed a distributed code for elapsed time in both areas during a two-interval timing task. Specifically,



**Figure 4. Neural Sequences Provide a Set of Near Orthogonal Basis Functions to Read Out Time**

(A) Prototypical examples of different dynamical regimes that can encode time. Examples are based on a number of experimentally observed dynamical regimes, e.g., linear (lin) or exponential (exp) ramping, and a high-dimensional periodic regime (“Fourier”). The corresponding sequentiality index (Sqi) is displayed on top. Colored squares emphasize the dynamics used in (B) and corresponding dots in (C)–(E).

(B) The trajectories (color coded as in Figure 3A) generated by 4 activity patterns from (A) denoted by the corresponding color-coded square and the target functions (gray).

(legend continued on next page)

using traditional decoders elapsed time was decoded equally well in M2 and DLS on a trial-by-trial basis. Interestingly, however, dynamical regimes in DLS and M2 exhibited different signatures: the dynamics in DLS was more sequential and provided a better set of basis functions for downstream areas to read out time in a biologically plausible manner. Importantly, M2 sends a strong excitatory projection to the DLS, which plays a role in driving striatal activity during reward-conditioned behavior (Lee et al., 2019), raising the possibility that the mutually inhibitory circuit motifs of the striatum are optimizing cortical dynamics for downstream areas to read out time (Burke et al., 2017).

We propose that neural sequences can provide a quasi-orthogonal set of basis functions for downstream areas to read out time in a biologically plausible manner. The biological constraints include the fact that the projecting neurons in a given area are either excitatory (e.g., cortex) or inhibitory (e.g., striatum); thus, first-order downstream neurons generally receive only excitatory or inhibitory weights from a given area. Additionally, in contrast to the machine learning and Bayesian decoder methods often used to demonstrate the encoding of elapsed time, downstream biological networks are likely to rely on simple associative forms of synaptic plasticity. These constraints can severely limit the ability of downstream neurons to effectively read out time. Here, we showed that when biological constraints are taken into account, neural sequences provide a superior dynamical regime to encode time, compared to ramps and complex spatiotemporal patterns. But we stress, that many of the dynamic regimes considered (Figure 4), including linear and exponential ramping, can drive complex temporal patterns when using more sophisticated decoding schemes, or by allowing positive and negative weights (Shankar and Howard, 2012; Liu et al., 2019). More generally, however, the quasi-orthogonality of neural sequences is advantageous because in the extreme it resembles the coordinate system of neuron space (e.g., neuron's activity vector over time is composed of 0 s and a single 1). And this standard coordinate system provides the only set of orthogonal basis functions that does not require negative values. Indeed, the advantage of sparse neural sequences has been previously noted in a bird song model showing that increased temporal sparsity decreases learning time (Fiete et al., 2004).

These results help clarify a large body of diverse experimental data regarding temporal processing and raise the hypothesis that some of the local computations performed by different areas might be best understood not simply as encoding time but optimizing the code. Specifically, a large body of data has suggested a pivotal role for the striatum in timing in the range of seconds and that time is encoded in dynamically changing spatiotemporal patterns of neural activity (Buhusi and Meck, 2005; Merchant et al., 2013a; Paton and Buonomano, 2018). Yet it remains

unknown whether the striatum should be considered a timer per se—in the sense that it actively generates the appropriate dynamics or is simply “propagating” the spatiotemporal patterns of input it receives. Our results are consistent with the suggestion that, while the DLS might not generate the neural dynamics that underlies timing, it may optimize the dynamics by creating neural sequences that are ideally suited for downstream areas to generate timed patterns.

## STAR★METHODS

Detailed methods are provided in the online version of this paper and include the following:

- KEY RESOURCES TABLE
- RESOURCE AVAILABILITY
  - Lead Contact
  - Materials Availability
  - Data and Code Availability
- EXPERIMENTAL MODEL AND SUBJECT DETAILS
- METHOD DETAILS
  - Surgical procedures
  - Two-interval timing task
  - Electrophysiological recordings
  - Absolute scaling index
  - Decoding of elapsed time and lick onset
  - Sequentiality Index
  - Non-negative weight constrained least square fitting model
  - Generation of artificial dynamics
  - Ramp up (linear)
  - Ramp up/down (linear)
  - Ramp random
  - Exponential ramping down
  - Fourier-like
  - Chaotic
  - Sequences with different temporal sparsity
  - Multiple peaks
- QUANTIFICATION AND STATISTICAL ANALYSIS

## SUPPLEMENTAL INFORMATION

Supplemental Information can be found online at <https://doi.org/10.1016/j.neuron.2020.08.020>.

## ACKNOWLEDGMENTS

We thank Konstantin Bakhurin, Kwang Lee, and Vishwa Goudar for technical assistance and helpful discussions. D.V.B. and S.C.M. were supported by NIH grant NS100050. S.C.M. was supported by NIH grants NS096994, DA042739, and DA005010 and NSF NeuroNex Award 1707408. S.Z. was supported by the Marion Bowen Neurobiology Postdoctoral Grant Program at UCLA.

(C) The  $S_{ij}$  is significantly correlated with the performance of the output units ( $n = 15$  simulated datasets, Pearson correlation coefficient  $r = 0.890$ ,  $p < 0.0001$ ). The black line represents the best linear fit.

(D) Average of the angles between all unit ( $\mathbf{x}$ ) pairs correlates with model performance (correlation coefficient  $r = 0.936$ ,  $p < 0.0001$ ). Note that for the sequence 4 dynamics outlined in red (corresponding to the red dots in C and E) the average angle is 1.47 in radians, corresponding to a near orthogonal 84 degrees.

(E) Average paired angle correlates with sequentiality index (correlation coefficient  $r = 0.948$ ,  $P < 0.0001$ ).



### AUTHOR CONTRIBUTIONS

S.Z. designed and carried out experiments, analyzed data, and wrote the manuscript. S.C.M. and D.V.B. conceived the project, designed experiments, analyzed data, and wrote the manuscript.

### DECLARATION OF INTERESTS

The authors declare no competing interests.

Received: March 1, 2020  
Revised: July 20, 2020  
Accepted: August 20, 2020  
Published: September 17, 2020

### REFERENCES

- Bakurin, K.I., Goudar, V., Shobe, J.L., Claar, L.D., Buonomano, D.V., and Masmanidis, S.C. (2017). Differential Encoding of Time by Prefrontal and Striatal Network Dynamics. *J. Neurosci.* *37*, 854–870.
- Buhusi, C.V., and Meck, W.H. (2005). What makes us tick? Functional and neural mechanisms of interval timing. *Nat. Rev. Neurosci.* *6*, 755–765.
- Buonomano, D.V. (2005). A learning rule for the emergence of stable dynamics and timing in recurrent networks. *J. Neurophysiol.* *94*, 2275–2283.
- Burke, D.A., Rotstein, H.G., and Alvarez, V.A. (2017). Striatal Local Circuitry: A New Framework for Lateral Inhibition. *Neuron* *96*, 267–284.
- Carnevale, F., de Lafuente, V., Romo, R., Barak, O., and Parga, N. (2015). Dynamic Control of Response Criterion in Premotor Cortex during Perceptual Detection under Temporal Uncertainty. *Neuron* *86*, 1067–1077.
- Chang, C.C., and Lin, C.J. (2011). LIBSVM: A Library for Support Vector Machines. *ACM Transactions on Intelligent Systems and Technology*. Published online May 2011. <https://doi.org/10.1145/1961189.1961199>.
- Crowe, D.A., Zarco, W., Bartolo, R., and Merchant, H. (2014). Dynamic representation of the temporal and sequential structure of rhythmic movements in the primate medial premotor cortex. *J. Neurosci.* *34*, 11972–11983.
- Emmons, E.B., De Corte, B.J., Kim, Y., Parker, K.L., Matell, M.S., and Narayanan, N.S. (2017). Rodent Medial Frontal Control of Temporal Processing in the Dorsomedial Striatum. *J. Neurosci.* *37*, 8718–8733.
- Fiete, I.R., Hahnloser, R.H.R., Fee, M.S., and Seung, H.S. (2004). Temporal sparseness of the premotor drive is important for rapid learning in a neural network model of birdsong. *J. Neurophysiol.* *92*, 2274–2282.
- Gouvêa, T.S., Monteiro, T., Motiwala, A., Soares, S., Machens, C., and Paton, J.J. (2015). Striatal dynamics explain duration judgments. *eLife* *4*, e11386.
- Hahnloser, R.H.R., Kozhevnikov, A.A., and Fee, M.S. (2002). An ultra-sparse code underlies the generation of neural sequences in a songbird. *Nature* *419*, 65–70.
- Hasselmo, M.E. (2008). Grid cell mechanisms and function: contributions of entorhinal persistent spiking and phase resetting. *Hippocampus* *18*, 1213–1229.
- Heys, J.G., and Dombeck, D.A. (2018). Evidence for a subcircuit in medial entorhinal cortex representing elapsed time during immobility. *Nat. Neurosci.* *21*, 1574–1582.
- Ivry, R.B., and Spencer, R.M.C. (2004). The neural representation of time. *Curr. Opin. Neurobiol.* *14*, 225–232.
- Kraus, B.J., Robinson, R.J., 2nd, White, J.A., Eichenbaum, H., and Hasselmo, M.E. (2013). Hippocampal “time cells”: time versus path integration. *Neuron* *78*, 1090–1101.
- Kraus, B.J., Brandon, M.P., Robinson, R.J., 2nd, Connerney, M.A., Hasselmo, M.E., and Eichenbaum, H. (2015). During Running in Place, Grid Cells Integrate Elapsed Time and Distance Run. *Neuron* *88*, 578–589.
- Lee, K., Bakurin, K.I., Claar, L.D., Holley, S.M., Chong, N.C., Cepeda, C., Levine, M.S., and Masmanidis, S.C. (2019). Gain Modulation by Corticostriatal and Thalamostriatal Input Signals during Reward-Conditioned Behavior. *Cell Rep.* *29*, 2438–2449.
- Leon, M.I., and Shadlen, M.N. (2003). Representation of time by neurons in the posterior parietal cortex of the macaque. *Neuron* *38*, 317–327.
- Liu, Y., Tiganj, Z., Hasselmo, M.E., and Howard, M.W. (2019). A neural micro-circuit model for a scalable scale-invariant representation of time. *Hippocampus* *29*, 260–274.
- Long, M.A., and Fee, M.S. (2008). Using temperature to analyse temporal dynamics in the songbird motor pathway. *Nature* *456*, 189–194.
- Long, M.A., Jin, D.Z., and Fee, M.S. (2010). Support for a synaptic chain model of neuronal sequence generation. *Nature* *468*, 394–399.
- MacDonald, C.J., Lepage, K.Q., Eden, U.T., and Eichenbaum, H. (2011). Hippocampal “time cells” bridge the gap in memory for discontinuous events. *Neuron* *71*, 737–749.
- Mello, G.B.M., Soares, S., and Paton, J.J. (2015). A scalable population code for time in the striatum. *Curr. Biol.* *25*, 1113–1122.
- Merchant, H., Harrington, D.L., and Meck, W.H. (2013a). Neural basis of the perception and estimation of time. *Annu. Rev. Neurosci.* *36*, 313–336.
- Merchant, H., Pérez, O., Zarco, W., and Gámez, J. (2013b). Interval tuning in the primate medial premotor cortex as a general timing mechanism. *J. Neurosci.* *33*, 9082–9096.
- Murakami, M., Vicente, M.I., Costa, G.M., and Mainen, Z.F. (2014). Neural antecedents of self-initiated actions in secondary motor cortex. *Nat. Neurosci.* *17*, 1574–1582.
- Murray, J.M., and Escola, G.S. (2017). Learning multiple variable-speed sequences in striatum via cortical tutoring. *eLife* *6*, e26084.
- Orhan, A.E., and Ma, W.J. (2019). A diverse range of factors affect the nature of neural representations underlying short-term memory. *Nat. Neurosci.* *22*, 275–283.
- Pachitariu, M., Steinmetz, N., Kadir, S., Carandini, M., and Kennedy, D.H. (2016). Kilosort: realtime spike-sorting for extracellular electrophysiology with hundreds of channels. *bioRxiv*. <https://doi.org/10.1101/061481>.
- Pastalkova, E., Itskov, V., Amarasingham, A., and Buzsáki, G. (2008). Internally generated cell assembly sequences in the rat hippocampus. *Science* *321*, 1322–1327.
- Paton, J.J., and Buonomano, D.V. (2018). The Neural Basis of Timing: Distributed Mechanisms for Diverse Functions. *Neuron* *98*, 687–705.
- Rajan, K., Harvey, C.D., and Tank, D.W. (2016). Recurrent Network Models of Sequence Generation and Memory. *Neuron* *90*, 128–142.
- Shankar, K.H., and Howard, M.W. (2012). A scale-invariant internal representation of time. *Neural Comput.* *24*, 134–193.
- Shepherd, G.M. (1998). *The Synaptic Organization of the Brain*, Fourth Edition (Oxford University).
- Stokes, M.G., Kusunoki, M., Sigala, N., Nili, H., Gaffan, D., and Duncan, J. (2013). Dynamic coding for cognitive control in prefrontal cortex. *Neuron* *78*, 364–375.
- Tsao, A., Sugar, J., Lu, L., Wang, C., Knierim, J.J., Moser, M.-B., and Moser, E.I. (2018). Integrating time from experience in the lateral entorhinal cortex. *Nature* *561*, 57–62.
- van der Meer, M.A., and Redish, A.D. (2011). Theta phase precession in rat ventral striatum links place and reward information. *J. Neurosci.* *31*, 2843–2854.
- Wang, J., Narain, D., Hosseini, E.A., and Jazayeri, M. (2018). Flexible timing by temporal scaling of cortical responses. *Nat. Neurosci.* *21*, 102–110.
- Yang, L., Lee, K., Villagrancia, J., and Masmanidis, S.C. (2020). Open source silicon microprobes for high throughput neural recording. *J. Neural Eng.* *17*, 016036.

## STAR★METHODS

### KEY RESOURCES TABLE

REAGENT or RESOURCE	SOURCE	IDENTIFIER
Deposited Data		
Preprocessed data	This paper	<a href="https://dx.doi.org/10.17632/mz357z8pwx.1">https://dx.doi.org/10.17632/mz357z8pwx.1</a>
Experimental Models: Organisms/Strains		
Mouse: C57BL/6J	<a href="https://www.jax.org/strain/000664">https://www.jax.org/strain/000664</a>	RRID:IMSR_JAX:000664
Software and Algorithms		
MATLAB	MathWorks	N/A
Prism	GraphPad Software	N/A
Kilosort	<a href="#">Pachitariu et al. (2016)</a>	N/A
LIBSVM	<a href="#">Chang and Lin (2011)</a>	<a href="https://www.csie.ntu.edu.tw/~cjlin/libsvm/">https://www.csie.ntu.edu.tw/~cjlin/libsvm/</a>
Study specific analysis code	This paper	<a href="https://github.com/ShanglinZhou/M2_DLS_2Intervals">https://github.com/ShanglinZhou/M2_DLS_2Intervals</a>

### RESOURCE AVAILABILITY

#### Lead Contact

Further information and requests for resources and reagents should be directed to and will be fulfilled by the Lead Contact, Dean V. Buonomano ([dbuono@ucla.edu](mailto:dbuono@ucla.edu)).

#### Materials Availability

This study did not generate new unique reagents.

#### Data and Code Availability

The pre-processed data and codes to analyze the pre-processed data are available at <https://dx.doi.org/10.17632/mz357z8pwx.1>. Codes for the ASI and Sql measure used in this study can also be found at: [https://github.com/ShanglinZhou/M2\\_DLS\\_2Intervals](https://github.com/ShanglinZhou/M2_DLS_2Intervals). The raw data are available on reasonable request.

### EXPERIMENTAL MODEL AND SUBJECT DETAILS

Male C57BL/6J mice (n = 8, 14 – 20 weeks old at the time of recording (The Jackson Laboratory #000664) were used in this study. Animals were kept on a 12-h light cycle, and group housed until the first stereotaxic surgery. All procedures were approved by the University of California, Los Angeles Chancellor's Animal Research Committee.

### METHOD DETAILS

#### Surgical procedures

Animals underwent an initial head bar implantation surgery under isoflurane anesthesia in a stereotaxic apparatus (model 1900; Kopf Instruments) to fix stainless steel head restraint bars bilaterally on the skull with dental cement. Animals recovered for at least one week before starting behavioral training. Animals underwent a second surgery under isoflurane anesthesia on the day prior to recording, to make craniotomies for silicon microprobe insertion in M2 and DLS. An additional craniotomy was made over the posterior cerebellum for placement of an electrical reference wire. Animals were individually housed after surgery. All behavioral training and recording sessions were performed in awake, head-restrained animals.

#### Two-interval timing task

Mice were food restricted to maintain their weight at approximately 90% of their baseline level and given water *ad libitum*. During daily training sessions, animals were mounted on the head bar restraint bracket and stood on a fixed polystyrene ball. Mice were initially habituated to head fixation and trained to consume a liquid reward (5  $\mu$ L, 10% sweetened condensed milk). The reward was delivered from a tube positioned between an infrared lick meter (Island Motion) by actuation of an audible solenoid valve (Neptune Research). In these habituation sessions, animals were given a total of 80 reward stimuli with intertrial interval (ITI) randomly sampled from a uniform distribution of 20 – 30 s, and were exposed to a constant stream of pure air through a tube positioned in front of the nose (2 L/min air flow). When animals reached a criterion of consuming at least 90% of the delivered rewards for two consecutive days, they were

presented with olfactory cues (isoamyl acetate or citral corresponding to short or long intervals in a counterbalanced manner). Olfactory cues with a duration of 0.2 s were made by bubbling air (0.15 L/min) through aromatic liquids diluted 1:10 in mineral oil (Sigma-Aldrich), and merging this product with the 2 L/min stream of pure air. Initially, cues were followed by reward delivery after 3 s or 6 s irrespective of the animal's licking response. The short and long interval trials were presented in random order (80 – 100 trials per interval, with ITIs randomly sampled from a uniform distribution of 20 – 30 s). After training animals on both time intervals using unconditional reward delivery for at least one week (one session per day), we introduced the final stage of training, which included acceptance windows to further differentiate their licking responses. These windows were defined as 1.5 – 3 s and 3 – 6 s after cue onset for the short and long intervals, respectively. Reward was omitted if mice licked before these time windows; otherwise, reward was delivered regardless of whether or not they licked. When the mean anticipatory lick onset times exceeded 1.5 s for the short interval and 3 s for the long interval for at least two consecutive days, animals underwent a surgical procedure in preparation for recording on the following day. On average animals went through  $13.25 \pm 1.25$  days of training with two cues before recording. On the recording session, animals received 100 – 240 trials per interval in random order with ITIs randomly sampled from a uniform distribution of 20 – 30 s. Analysis of neural activity only used trials containing anticipatory licking (both rewarded and unrewarded trials). Furthermore, to minimize potential confounds from spontaneous licking, we excluded trials in which licking occurred within a one second period before cue onset.

### Electrophysiological recordings

Simultaneous recordings were performed on the right hemisphere in M2 (2.5 mm anterior, 0.55 to 1.75 mm lateral, 0.5 mm ventral relative to bregma) and DLS (1 mm anterior, 1.9 to 2.5 mm lateral, 3.5 mm ventral relative to bregma), using silicon microprobes containing 256 electrodes targeting each area (type 256A in M2 and 256ANS in DLS) (Yang et al., 2020). The placement of the silicon microprobes was confirmed histologically at the end of each experiment by coating the prongs with a fluorescent dye (Di-D; Thermo Fisher) before implantation. Spike sorting was carried out using Kilosort software (Pachitariu et al., 2016). If not specified, all units were included in the analysis. Each unit's firing rate per trial was estimated by convolving the spike train with a decaying exponential kernel (time constant = 0.1 s). Firing rates were then normalized to the range of 0 and 1. To determine whether a cell was significantly responsive to a particular interval, the firing rate was binned in steps of 0.1 s from the time of cue onset until the end of the interval (3 s for short, and 6 s for long). A unit was classified as being responsive to a given interval, if there were at least two consecutive bins showing a significant difference relative to baseline (two sample unpaired t test,  $p < 0.05$ ).

### Absolute scaling index

We developed an absolute scaling index (ASI) to quantify whether the temporal profiles of the neuronal firing rates dilate from the short to long interval (temporal scaling), or remain unchanged (absolute timing). As illustrated in Figure S2A, this index searches for the best transformation to match the response profile of the long interval ( $y(t)$ ) to the short interval ( $x(t)$ ), by concatenating an absolute portion of the long response ( $y^{abs}(t)$ ) with a temporally scaled portion of the long response ( $y^{scale}(t')$ ). More specifically, we searched for a breakpoint  $\tau$  to divide  $y(t)$  into an absolute and scaled segment, that best matches  $x(t)$ , as measured by the Euclidean distance ( $Dist(\tau)$ ). In the case of absolute timing the best match will be when the entire short response is matched with the unscaled early part of the long response with  $\tau = t_{max}$ , resulting in an  $ASI = 1$  – i.e. the first half of the long interval matches the entire short interval. In contrast, an  $ASI = 0$ , would correspond to a  $\tau = 0$ , and the response profile of a neuron during the short and long interval match when plotted in normalized time. ASI is calculated through the following steps.

$$(1) Dist(\tau) = \sqrt{\sum_{t=0}^{\tau} [x(t) - y(t)]^2 + \sum_{t=\tau}^{t_{max}} [x(t) - y(\tau + \alpha(t - \tau))]^2}$$

$$(2) \tau_{min} = \operatorname{argmin}_{\tau} (Dist(\tau))$$

$$(3) W^{abs}(\tau_{min}) = 1 / N_{1:\tau_{min}} \sum_{t=0}^{\tau_{min}} |x(t) - x(0)| |y(t) - y(0)|$$

$$(4) W^{scale}(\tau_{min}) = 1 / N_{\tau_{min}:t_{max}} \sum_{t=\tau_{min}}^{t_{max}} \left| x(t) - x(\tau_{min}) \right| \left| y(\tau_{min} + \alpha(t - \tau_{min})) - y(\tau_{min}) \right|$$

$$(5) AbsR(\tau_{min}) = \frac{W^{abs}(\tau_{min})}{W^{scale}(\tau_{min}) + W^{abs}(\tau_{min})}$$

$$(6) ASI = \left( \frac{\tau_{min}}{t_{max}} + AbsR(\tau_{min}) \right) / 2$$

$\tau$  spans all possible breakpoints from 0 to  $t_{max}$  (for the short interval). The segment before  $\tau$  denotes the absolute period and the period after  $\tau$  denotes the segment scaled by  $\alpha = (2 * t_{max} - \tau) / (t_{max} - \tau)$  for the long response.  $\tau_{min}$  corresponds to the breakpoint with the minimal Euclidian distance  $\text{Dist}(\tau)$ . In steps 3 and 4 the absolute and scaling weights are calculated between dynamics for short interval and time-warped dynamics for the long interval with  $N_{a,b}$  being the number of time points between a and b, and absolute ratio  $\text{AbsR}(\tau_{min})$  at  $\tau_{min}$  were calculated. The absolute temporal factor corresponds to  $\tau_{min} / t_{max}$ , and ASI was defined as the average of the absolute temporal factor and the  $\text{AbsR}(\tau_{min})$ . Only cells responsive to both the short and long intervals were used for the ASI analysis.

### Decoding of elapsed time and lick onset

To test how well the dynamics in M2 and DLS could decode the time elapsed from cue onset to the scheduled time of reward, we used a standard supervised decoder, specifically, a support vector machine (SVM) decoder as described in a previous study (Bakurin et al., 2017). Specifically, decoding was performed with a one-to-one multiclass support vector machine (SVM) with a radial-basis function (RBF) kernel, and implemented using the LIBSVM library (Chang and Lin, 2011). Decoding was performed on a trial-by-trial basis. For each trial the average firing rate of each neuron was binned to widths of 0.1 s and 0.2 s for the short and long intervals, respectively, leading to a total of 30 bins for both intervals. Elapsed time was decoded from the population firing rates in each trial by requiring a classifier to label each rate vector at a given bin in the trial as coming from one of the 30 time bins. Leave-one-trial-out cross validation was used. By testing a given bin the corresponding predicted time bin was defined as the bin that produced the highest score of all 30 readout units. Performance was defined as the correlation coefficient between the correct and predicted time bin across all trials tested. To compare the performance for M2 and DLS, we equalized the number of units in each area by using the minimum number of units (M) of the two areas, and randomly selected M units from the area with larger population to train the SVM, and repeated this process 10 times. Final performance was defined as the average correlation coefficient across these 10 repetitions.

Lick onset time in each trial was also decoded as described previously (Figures S2C and S2D) (Bakurin et al., 2017). Dynamics between 0.4 s before cue onset and 0.4 s after the maximum lick onset in a session was binned with steps of 0.1 s for both the short and long interval. The labels of each binned population rate vectors at the time, immediately before, and immediately after lick onset were assigned the value of 1; all other vectors were labeled as 0. The SVM's output was represented by a single readout that scores how closely each population vector in the test population trajectory predicts lick onset. The predicted lick onset bin was the one in which the readout was at its highest value. Testing was performed with a leave-one-trial-out strategy, and the performance was defined as the root mean square error (RMSE) between the correct lick onset and the predicted onsets across all tested trials. The number of units was again controlled between M2 and DLS.

### Sequentiality Index

To quantify the degree to which different dynamical regimes could be described as a sequence we developed a novel measure of sequentiality index (Sql). Our Sql was inspired by a previously described measure (Orhan and Ma, 2019), but relies on temporal sparsity rather than the ridge-to-background ratio, and is bounded between 0 and 1 (Figures 2 and 4). As illustrated in Figure 2D, this normalized sequentiality index was calculated as:

$$PE = \sum_{j=1}^M -p_j \log(p_j) / \log(M)$$

$$TS = 1 - \langle \sum_{i=1}^N -r_i^t \log(r_i^t) / \log(N) \rangle_t$$

$$Sql = \sqrt{PE * TS}$$

where PE (peak entropy) captures the entropy of the distribution of peak times across the entire population. M is the number of bins for estimating the peak time distribution (30 and 60 for neural dynamics in the short and long intervals in Figure 2, and 10 for the simulated dynamics in Figure 4), and  $p_j$  is the number of units that peak in time bin  $j$  divided by the total number of units. TS (temporal sparsity) provides a measure of entropy of the distribution of normalized activity in any given bin. TS is maximum when only one unit accounts for all the activity in each time bin  $t$ .  $r_i^t$  represents the activity of unit  $i$  in time bin  $t$ , normalized by the sum of the activity of all neurons at time  $t$ ;  $\langle \rangle_t$  denotes the time average; and  $N$  is the number of units. The Sql approaches 1 when the peak times of each neuron homogeneously tile the entire duration and one neuron is active at every moment in time with the temporal fields being non-overlapping. Note that Sql is sensitive to the width of the temporal fields of the neurons, and this is an important feature because the extreme sequences with very broad temporal field converge toward a regime with a fixed-point attractor. We stress that because sequentiality represents a fairly complex feature of dynamics, that no single measure of sequentiality is perfect. The measure defined here seems effective at capturing the biological dynamical regimes studied here. However, it is important to note that this measure can break down under some artificial manipulations (e.g., if one were to shuffle the time bins of a sequential neural trajectory).

### Non-negative weight constrained least square fitting model

Average dynamics in M2 and DLS, and prototypical dynamical regimes, were used as inputs to five output units (Figures 3 and 4). The five target intervals were represented as Gaussian functions with evenly spaced means over a total duration  $T$  of 3 or 6 s, representing the short and long intervals for the M2 and DLS analyses respectively and 1 s for prototypical dynamical regimes. To account for Weber's law the width ( $w$ ) of the Gaussian functions was 0.2 s and 0.4 s for the short and long intervals for the M2 and DLS analyses, and 0.025 s for the prototypical dynamics.

$$\text{Target}_i(t) = e^{-\frac{(t - \frac{i}{6} * T)^2}{2 * w^2}}$$

To "train" the output units, and ensure that all output weights were non-negative, we used a least square fitting function *lsqcurvefit* from MATLAB (MathWorks) with weight constrained between 0 and 10 (unless otherwise specified).

### Generation of artificial dynamics

To study the relationship between sequentiality index and the performance of non-negative weight constrained least square fitting model, we artificially generated various prototypical dynamics regimes composed of 100 units (Figure 4). In these prototypical regimes time spanned 0 to 1 s with steps  $dt$  of 0.001 s.

#### Ramp up (linear)

The activity of unit  $i$   $x_i(t)$  was defined as:

$$y_i(t) = t + 10^{-3}U(0, 1)$$

$$x_i(t) = y_i(t) / \max(y_i(t))$$

where  $U(0, 1)$  was a value sampled from a uniform distribution between 0 and 1 and  $\max(y_i(t))$  was the maximum value of the  $y_i$ . In effect all units ramped from 0 to 1 with the same slope with a small amount of noise.

#### Ramp up/down (linear)

As above, but 50 units ramped up and 50 units ramped down linearly.

#### Ramp random

Ramping dynamics of each unit started and ended at a random level chosen between 0 and 1:

$$a = U(0, 1)$$

$$b = U(0, 1)$$

$$x_i(t) = a + (b - a) * t$$

where  $a$  and  $b$  were randomly sampled from a uniform distribution  $U(0, 1)$ .

#### Exponential ramping down

The activity of unit  $i$   $x_i(t)$  was defined as:

$$x_i(t) = e^{-\frac{t}{\tau_i}} + 10^{-3}U(0, 1)$$

with  $\tau_i$  randomly sampled from a uniform distribution  $U(0.1, 2)$  and  $U(0, 1)$  being a uniform distribution between 0 and 1.

#### Fourier-like

A Series of sine waves with progressively increasing frequencies was defined as follows (note all values are positive):

$$x_i(t) = 0.5 * \sin(2 * \pi * i * t) + 0.5$$

#### Chaotic

Dynamics for each unit received independent Gaussian noise, which was described as:

$$\tau \frac{dx_i}{dt} = -x_i + \sigma(0, 1)$$

where  $\sigma(0, 1)$  is a random number sampled from a Gaussian distribution with 0 mean and 1 standard variance, and time constant  $\tau = 0.02$  s.

### Sequences with different temporal sparsity

Sequential dynamics with different temporal sparsity were defined as follows:

$$x_i(t) = e^{-\frac{(t-i/100)^2}{2w^2}}$$

where  $w$  took the values of 0.005, 0.025, 0.1, 0.25, or 0.5 s.

### Multiple peaks

Complex multi-peaked dynamics was generated similarly to prototypical *sequence* dynamics, but instead of a single Gaussian each unit was defined as the sum of  $p$  Gaussian functions ( $p = 1, 5, 10$  and  $25$  respectively), each with a mean chosen from a uniform distribution  $U(0, 1)$  and a width of  $0.025$  s.

### QUANTIFICATION AND STATISTICAL ANALYSIS

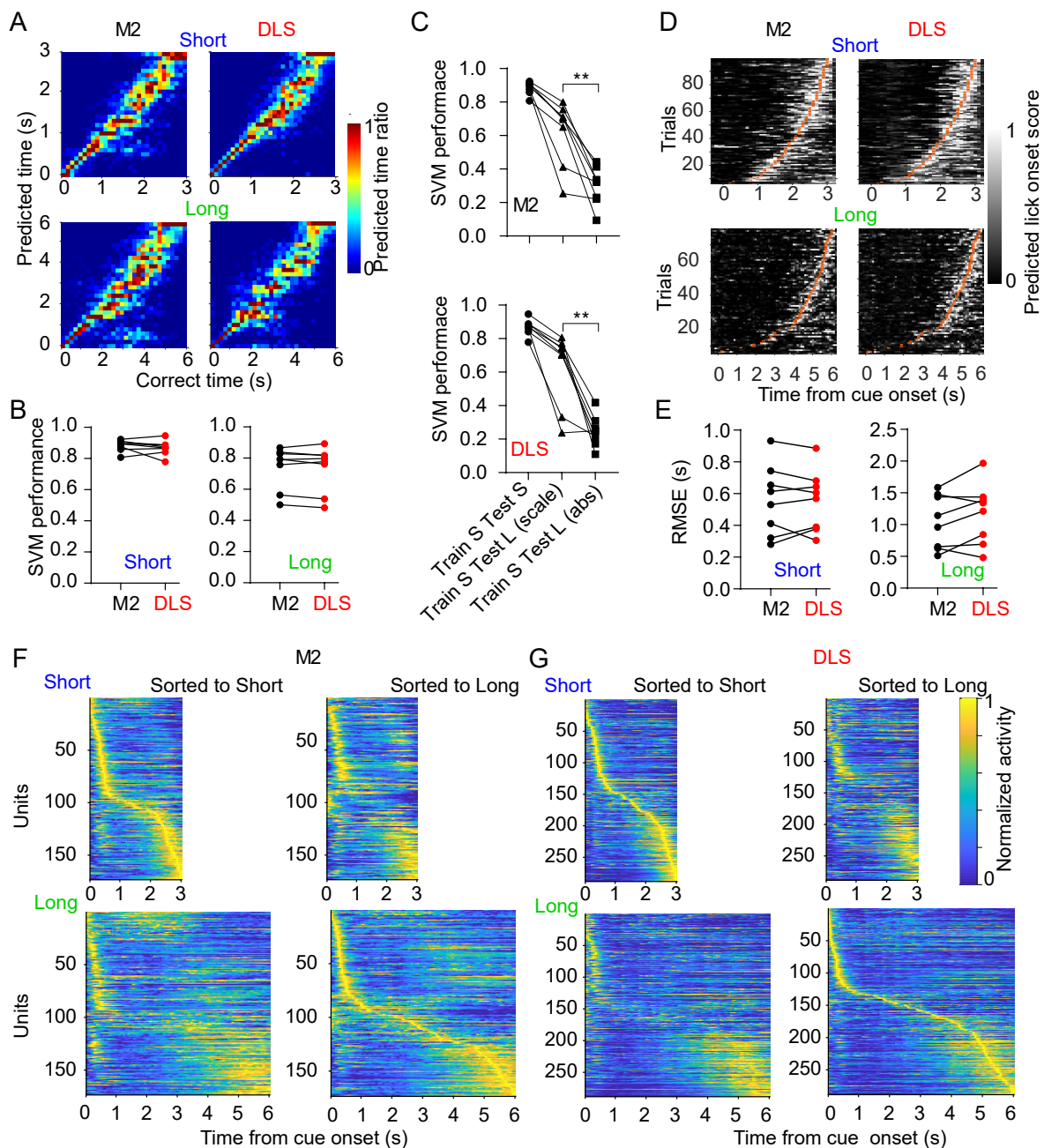
Statistical analyses were carried out with standard functions in MATLAB (MathWorks) and Prism (GraphPad Software). Data collection and analysis were not performed with blinding to the conditions of the experiments. The sample size, type of test and *P* values are indicated in the figure legends. Data distribution was assumed to be normal, but this was not formally tested. The *P* value of Pearson correlations was calculated with the MATLAB *corrcoef* function. All data and error bars represent the mean and SEM. In all figures, the convention is \*:  $p < 0.05$ , \*\*:  $p < 0.01$ , \*\*\*:  $p < 0.001$ , \*\*\*\*:  $p < 0.0001$ .

**Neuron, Volume 108**

**Supplemental Information**

**Neural Sequences as an Optimal  
Dynamical Regime for the Readout of Time**

**Shanglin Zhou, Sotiris C. Masmanidis, and Dean V. Buonomano**



**Figure S1. Related to Figure 2**  
**Population Dynamics of M2 and DLS Encode Time Equally Well.**

(A) Average cross-temporal classification matrix across all testing trials for the support vector machine (SVM) decoder applied to M2 (left) and DLS (right) data from one animal. The decoder was separately trained and tested on short (top) and long (bottom) interval trials.

(B) Comparison of SVM performance (Pearson correlation coefficient between the predicted and correct time bin). There is no significant difference in performance between M2 and DLS for either time interval ( $n = 8$  mice; two-sided paired t-test,  $t_7 = 0.919$ ,  $P = 0.389$  and  $t_7 = 0.280$ ,  $P = 0.787$  for the short and long interval, respectively).

(C) SVM decoder was trained on data for short interval. Data in three conditions were used to test: 1) Control, leave-out data for short interval (Train S Test S); Scale, long interval data by uniform down sampling to the same length of short interval (Train S Test Long (scale)); Absolute, first 3 s data for long interval (Train S Test Long (abs)). The SVM performance in the Scale condition is significantly higher than that in the Absolute condition in both M2 and DLS ( $n = 8$  mice, one-way repeated measures ANOVA on the Fisher transformed correlation coefficient with Tukey multiple comparison test, \*\*  $P = 0.004$  and  $P = 0.006$  in M2 and DLS respectively).

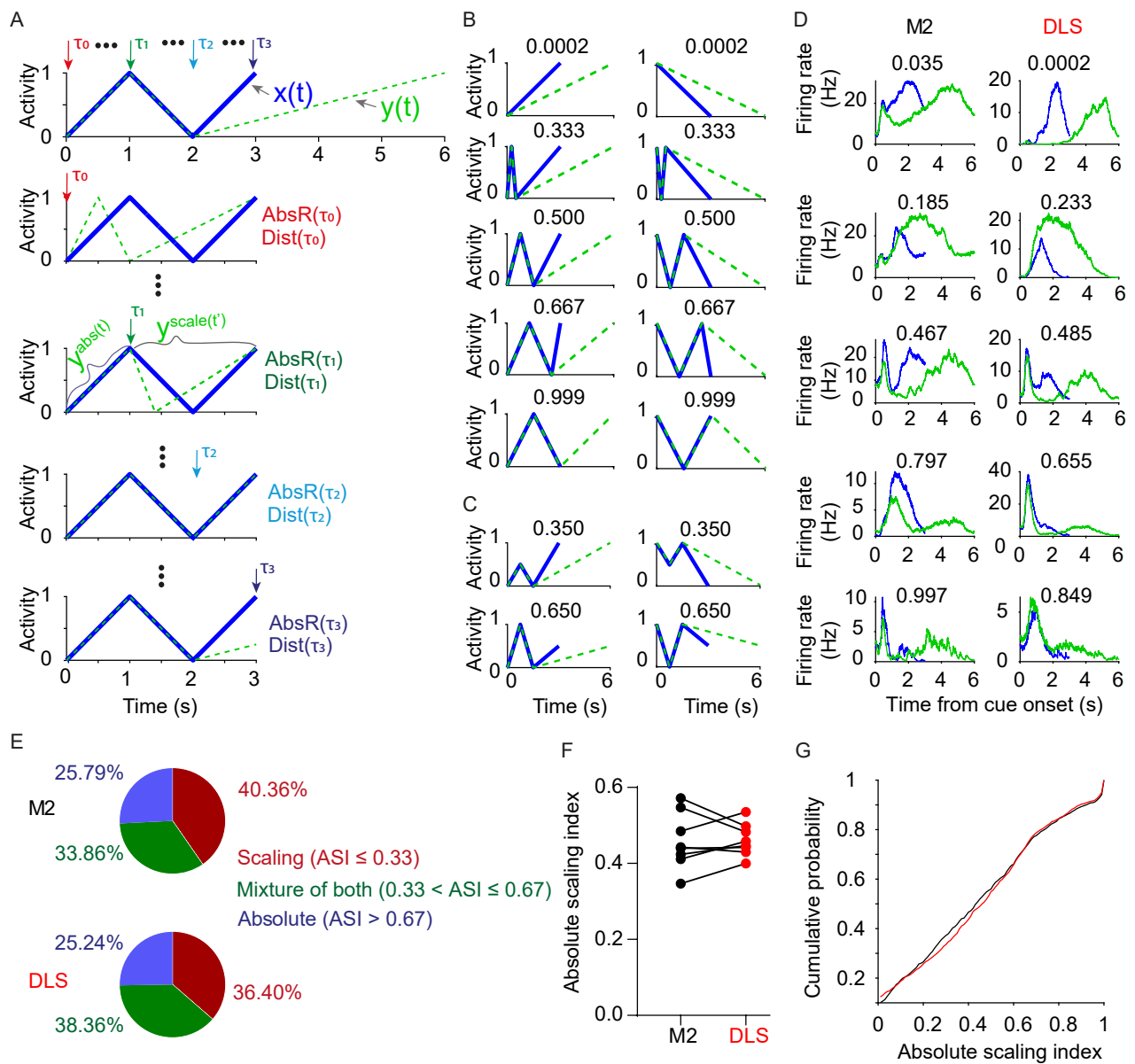
(D) Heat plot showing predicted lick onset score generated by the SVM trained and tested on dynamics in M2 (left) and DLS (right) for the short (top) and long (bottom) interval for one mouse. Trials are sorted by actual lick onset time, indicated by an orange tick mark in each trial.

(E) Comparison of the lick onset decoding performance quantified as the root mean square error between the predicted and actual lick onset. There is no significant difference in performance between M2 and DLS for either time interval ( $n = 8$  mice; two-sided paired t-test,  $t_7 = 0.147$ ,  $P = 0.888$  and  $t_7 = 1.648$ ,  $P = 0.143$  for the short and long interval, respectively).

(F) Population activity in M2 plot same as in Figure 2C for short interval (top) and long (bottom) according to index sorted by firing rate peak delay for the short (left) and long (right) interval respectively.

(G) Same as in F except for DLS.





**Figure S2. Related to Figure 2**

**M2 and DLS Dynamics Exhibit Similar Differences between Short and Long Interval Trials.**

(A) Simulated neural responses illustrating how the absolute scaling index (ASI) was calculated. Blue traces represent the short interval of 3 s, and green the long interval of 6 s (first row). Rows 2 to 5 illustrate series of values for the breakpoint  $\tau$ , which separates the absolute and scaled segments of the temporal profiles. As exemplified in row 3, dynamics for long interval before  $\tau$  is denoted as  $y^{abs}(t)$  which is just the original dynamics  $y(0-\tau)$ ; dynamics after  $\tau$  is denoted as  $y^{scale}(t)$  which is uniform down sampling of  $y(\tau-6)$  to the length of  $\tau-3$ .  $AbsR$  (absolute scaling ratio) and  $Dist$  (Euclidian distance between response of short interval and time warped response of long interval) are calculated as described in Star Methods at each  $\tau$ .

(B) Examples of simulated neural responses for short (blue) and long (green) intervals, with the corresponding ASI displayed at the top. Plots are ordered from high scaling responses (ASI  $\sim 0$ ) at the top to high absolute responses (ASI  $\sim 1$ ) at the bottom.

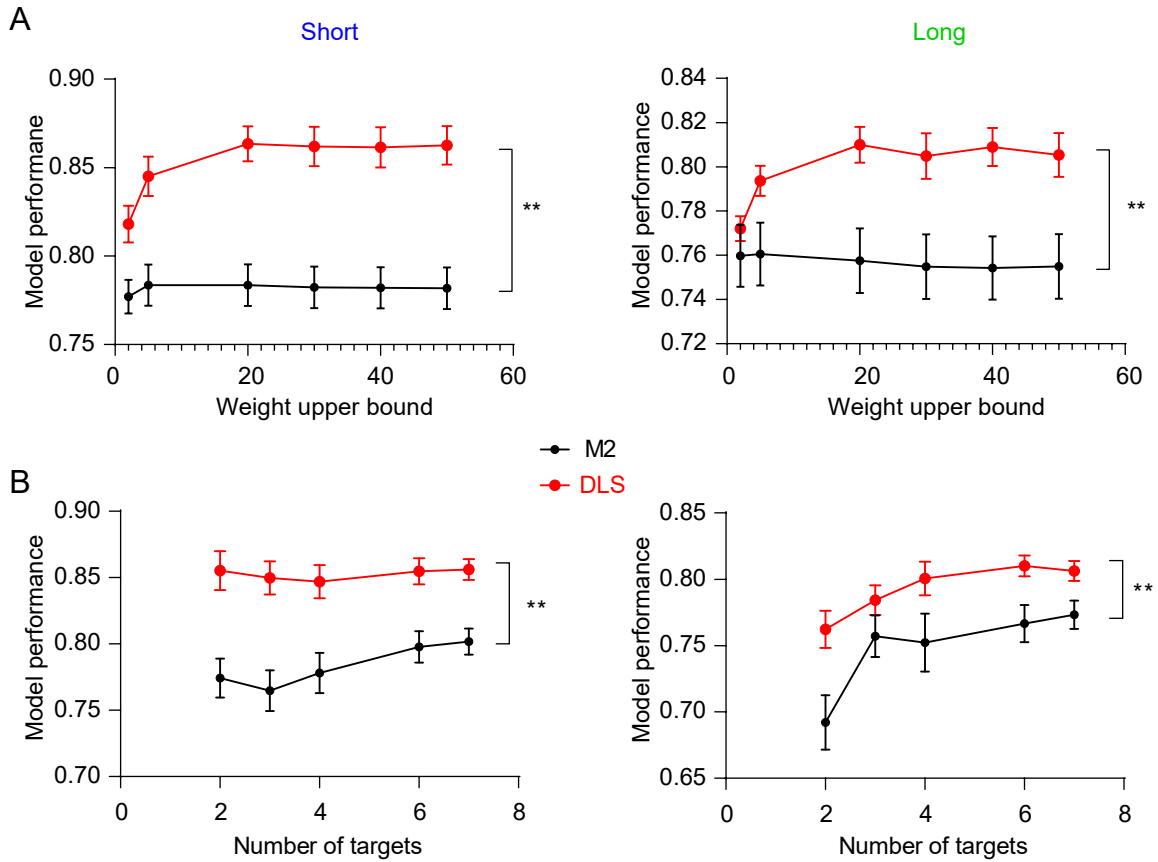
(C) Example of how ASI changes in simulated neural responses with the same  $\tau$  (the time point at which time warped responses of the long interval is most similar to the that of the short interval) but different  $AbsR$  (top versus bottom), which results in different ASI. The ASI is displayed at the top of each plot.

(D) The response of representative cells to both short (blue) and long (green) interval trials in M2 and DLS, with the corresponding ASI displayed on top.

(E) Fraction of M2 and DLS cells exhibiting scaling (ASI smaller or equal to 0.33), absolute (ASI higher than 0.67), or mixed responses (ASI higher than 0.33 and smaller or equal to 0.67). Data represent 954 M2 and 1023 DLS cells responsive to both intervals pooled from  $n = 8$  mice.

(F) There was no significant difference between the mean ASI in M2 and DLS ( $n = 8$  mice; two-sided paired t-test,  $t_7 = 0.172$ ,  $P = 0.868$ ).

(G) There was no significant difference between the ASI distribution of all cells recorded in M2 (black) and DLS (red).  $n = 954$  M2 and 1023 DLS cells responsive to both intervals pooled from 8 mice, two-sample Kolmogorov–Smirnov test,  $P = 0.33$ .



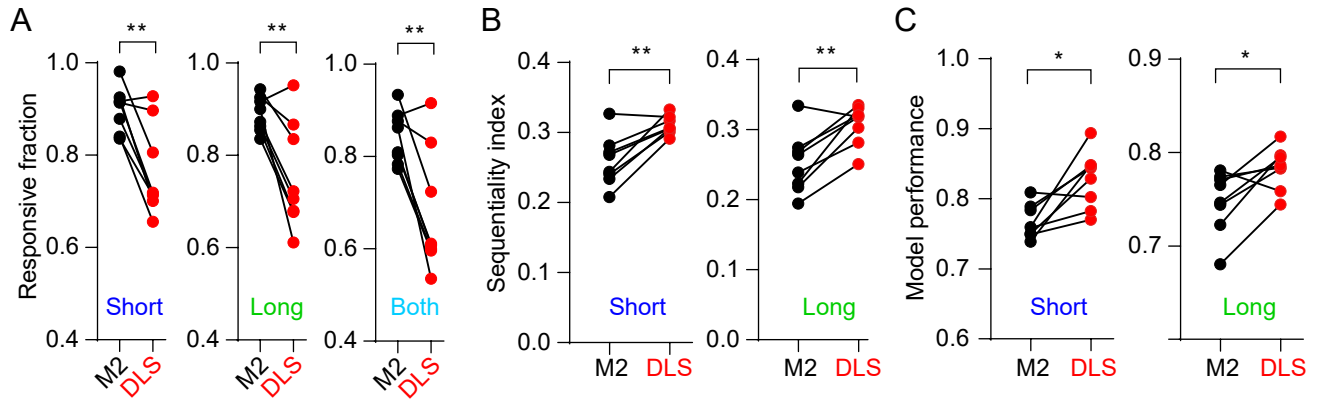
**Figure S3. Related to Figure 3**

**Superior Performance of Readout Model Using DLS Dynamics is Robust to Different Parameters.**

(A) The model performance was significantly higher using DLS relative to M2 dynamics under various upper bounds for the allowed weights. Short interval (left):  $n = 8$  mice, two-way repeated measures ANOVA on the Fisher transformed correlation coefficient, brain region effect:  $F_{1,7} = 19.27$ ,  $P = 0.003$ . Long interval (right):  $n = 8$  mice, two-way repeated measures ANOVA on the Fisher transformed correlation coefficient, brain region effect:  $F_{1,7} = 20.21$ ,  $P = 0.003$ .

(B) The model performance was significantly higher using DLS relative to M2 dynamics across different number of output units (number of target intervals). Short interval (left):  $n = 8$ , two-way repeated measures ANOVA on the Fisher transformed correlation coefficient, brain region effect:  $F_{1,7} = 15.30$ ,  $P = 0.006$ . Long interval (right): two way repeated measures ANOVA on the Fisher transformed correlation coefficient, brain region effect:  $F_{1,7} = 16.93$ ,  $P = 0.005$ .

Data were presented as mean $\pm$ SEM.



**Figure S4. Related to Figure 3**

**Analyses Based on Population Dynamics from the Subset of Neurons that were Classified as Responsive Cells**

(A) Fraction of cells that were significantly responsive to the short or long intervals, or both. In all three conditions, M2 contained a significantly higher fraction of responsive cells ( $n = 8$  mice; two-sided paired t-test,  $t_7 = 4.386$ ,  $P = 0.003$ ;  $t_7 = 3.997$ ,  $P = 0.005$  and  $t_7 = 4.287$ ,  $P = 0.004$  for the short, long, both intervals respectively).

(B) The sequentiality index in DLS was significantly higher than that in M2 for both time intervals using only responsive cells ( $n = 8$  mice; two-sided paired t test,  $t_7 = 4.613$ ,  $P = 0.0024$  and  $t_7 = 4.340$ ,  $P = 0.0034$  for the short and long interval, respectively).

(C) Model performance was significantly higher when output units were trained on DLS dynamics compared to M2 using only responsive cells, for both time intervals ( $n = 8$  mice; two-sided paired t-test,  $t_7 = 3.319$ ,  $P = 0.0128$  and  $t_7 = 3.135$ ,  $P = 0.0165$  for the short and long interval, respectively).